

Exploring in WA's Premier Gold Provinces

The Hole Story Presentation

23 April 2026

ASX code : HMG



Photo : Lake Austin Cue WA

Disclaimer and compliance statement

This presentation has been prepared by Hamelin Gold Limited (“Hamelin”). The information contained in this presentation is a professional opinion only and is given in good faith. Certain information in this document has been derived from third parties and though Hamelin has no reason to believe that it is not accurate, reliable or complete, it has not been independently audited or verified by Hamelin.

Any forward-looking statements included in this document involve subjective judgement and analysis and are subject to uncertainties, risks and contingencies, many of which are outside the control of, and maybe unknown to Hamelin. In particular, they speak only as of the date of this document, they assume the success of Hamelin’s strategies, and they are subject to significant regulatory, business, competitive and economic uncertainties and risks. Actual future events may vary materially from the forward looking statements and the assumptions on which the forward looking statements are based. Recipients of this document (“Recipients”) are cautioned to not place undue reliance on such forward-looking statements.

Hamelin makes no representation or warranty as to the accuracy, reliability or completeness of information in this document and does not take responsibility for updating any information or correcting any error or omission which may become apparent after this document has been issued.

To the extent permitted by law, Hamelin and its officers, employees, related bodies corporate and agents (“Agents”) disclaim all liability, direct, indirect or consequential (and whether or not arising out of the negligence, default or lack of care of Hamelin and/or any of its Agents) for any loss or damage suffered by a Recipient or other persons arising out of, or in connection with, any use or reliance on this presentation or information.

The information in this report that relates to Exploration Results is based on information compiled by Mr. Peter Bewick who is a Member of the Australasian Institute of Mining and Metallurgy. Mr. Bewick hold shares and options in Hamelin. He is a full time employee of Hamelin and has sufficient experience which is relevant to the style of mineralisation under consideration to qualify as a Competent Person as defined in the 2012 Edition of the 'Australian Code for Reporting of Exploration Results, Mineral Resources and Ore Reserves'. Mr Bewick consents to the inclusion in the report of the matters based on the information compiled by him, in the form and context in which it appears.

Hamelin confirms that it is not aware of any new information or data that materially affects the information in the relevant ASX releases and the form and context of the announcement has not materially changed. Hamelin confirms that the form and context in which the Competent Person’s findings are presented have not been materially modified from the original market announcements.

¹ Refer to Hamelin Gold IPO Prospectus dated 17 September 2021

This announcement has been approved for release by the Board of Hamelin.



Hamelin Gold Corporate Snapshot



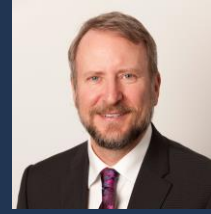
BOARD and KEY MANAGEMENT



Will Robinson
Non Executive Chairman
B.Comm, MAusIMM



Peter Bewick
Managing Director
B.Eng (Hons), MAusIMM



Justin Osborne
Non Executive Director
B.Sc (Hons), FAusIMM, MAICD



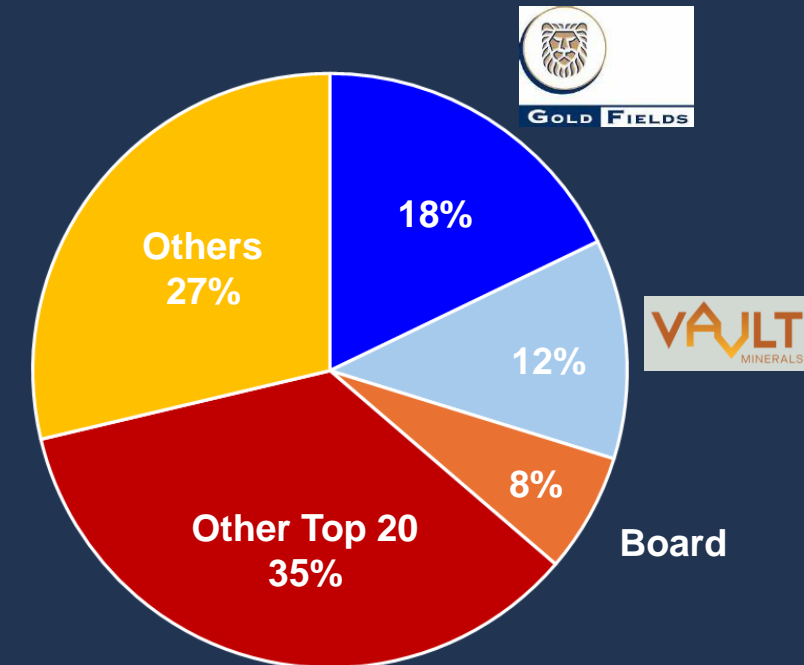
Philip Crutchfield KC
Non Executive Director
B.Comm, LL.B (Hons), LL.M LSE



Clayton Davys
Exploration Manager
B.Sc (Hons)

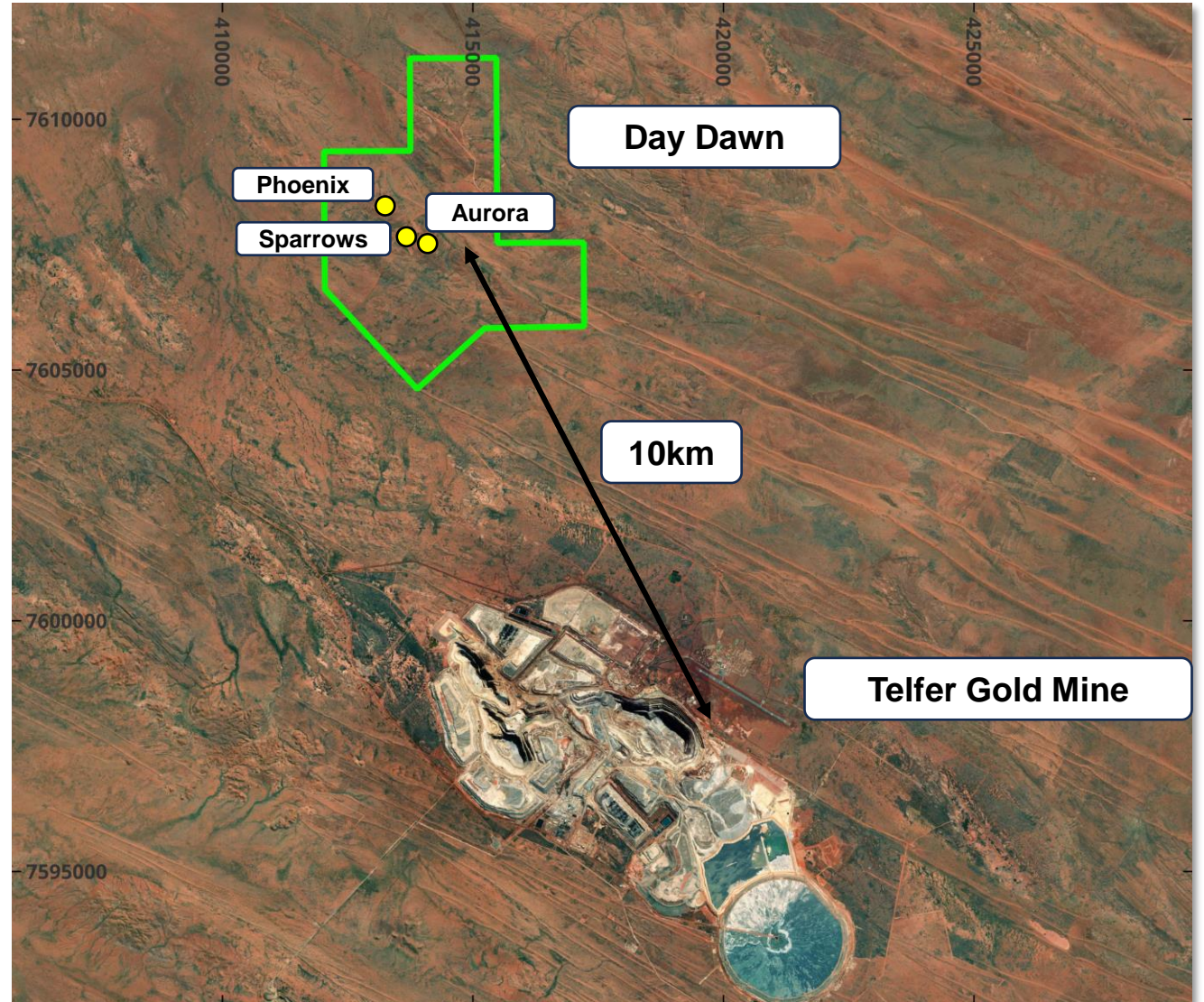
CAPITAL STRUCTURE

Shares on Issue	198.3M
Employee and Broker options	18.4M
Market capitalisation (@11c)	\$21.8M
Cash at 31/03/26	\$3.1M
Enterprise value	\$18.7M



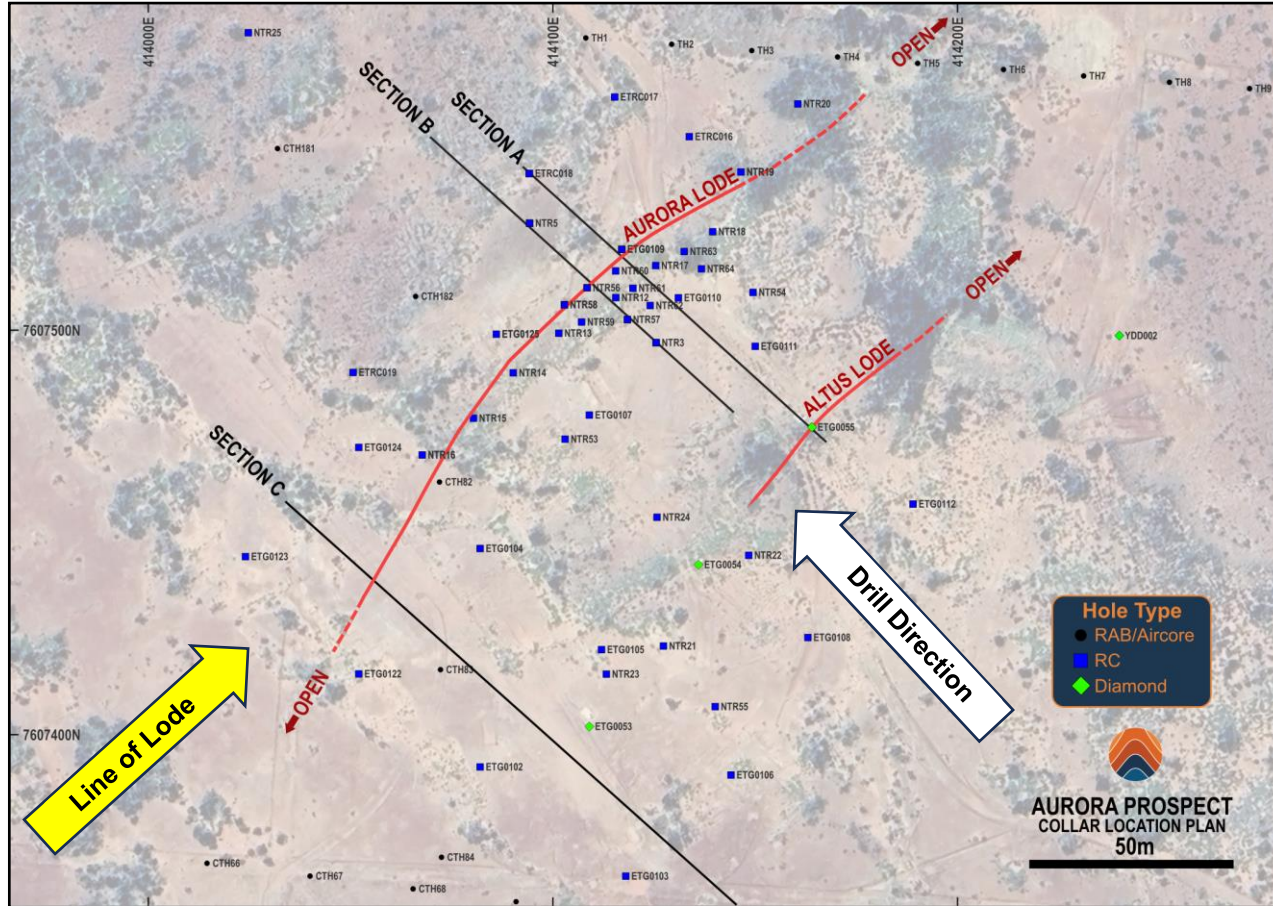
Day Dawn Project - Paterson

- 10km NW of the +20Moz Telfer gold-copper mine
 - High grade vein / reef style gold including;
 - Aurora
 - 7m @ 17.1 g/t Au from 16m
 - 3m @ 51.1 g/t Au from 35m
 - Sparrows
 - 4m @ 13.4 g/t Au from 178m
 - Phoenix
 - 4m @ 29.7 g/t Au from 8m
- (refer to ASX Announcement 9 February 2026)*
- Tenement grant late April 2026
 - Initial 3,000m RC program May / June 2026

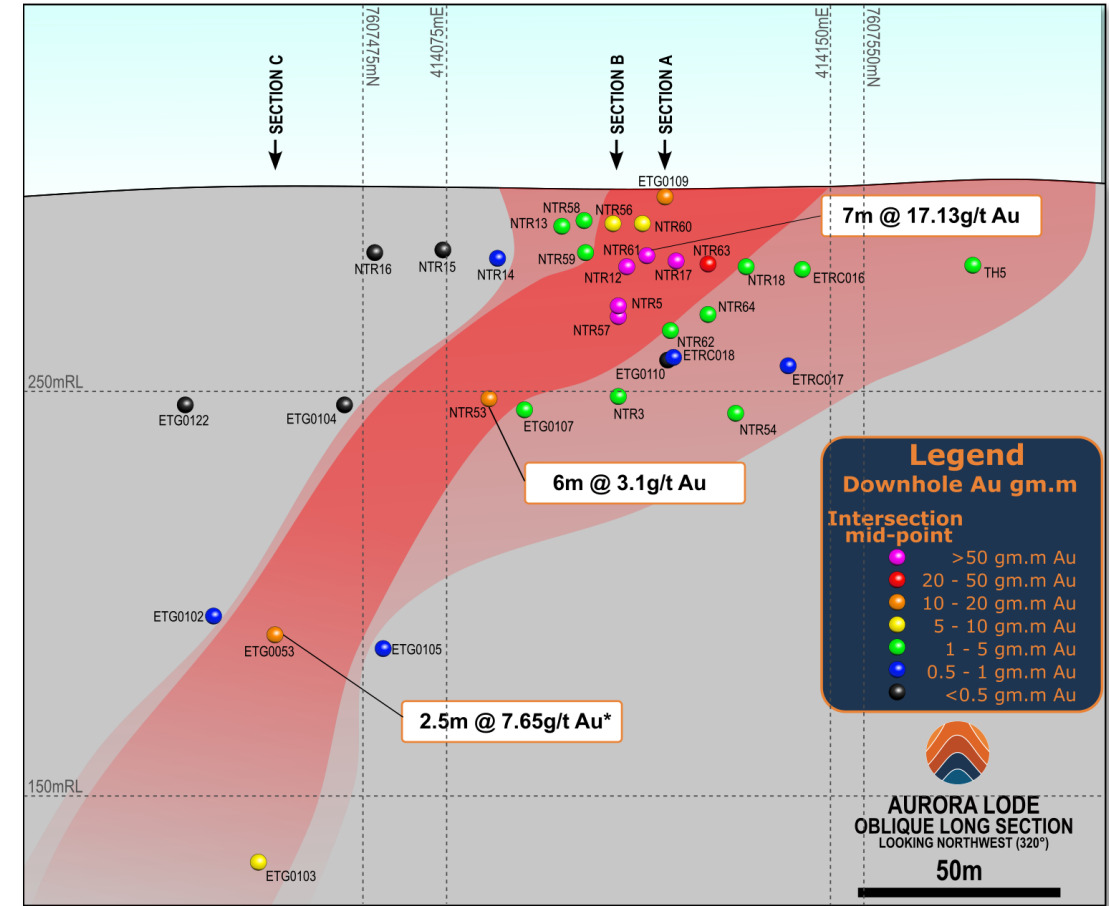


Day Dawn Project – Tenement Outline over Bing Sat imagery (GDA94 z51)

Day Dawn Project – Aurora Lode



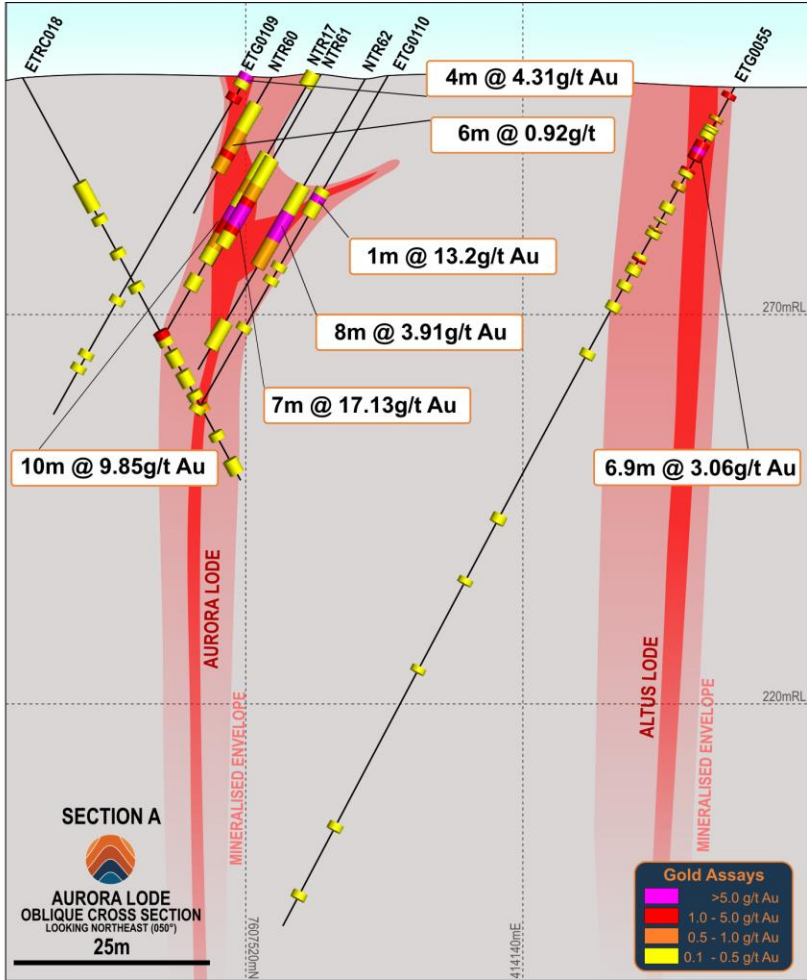
Aurora Prospect – Drill collar location on Bing Sat imagery



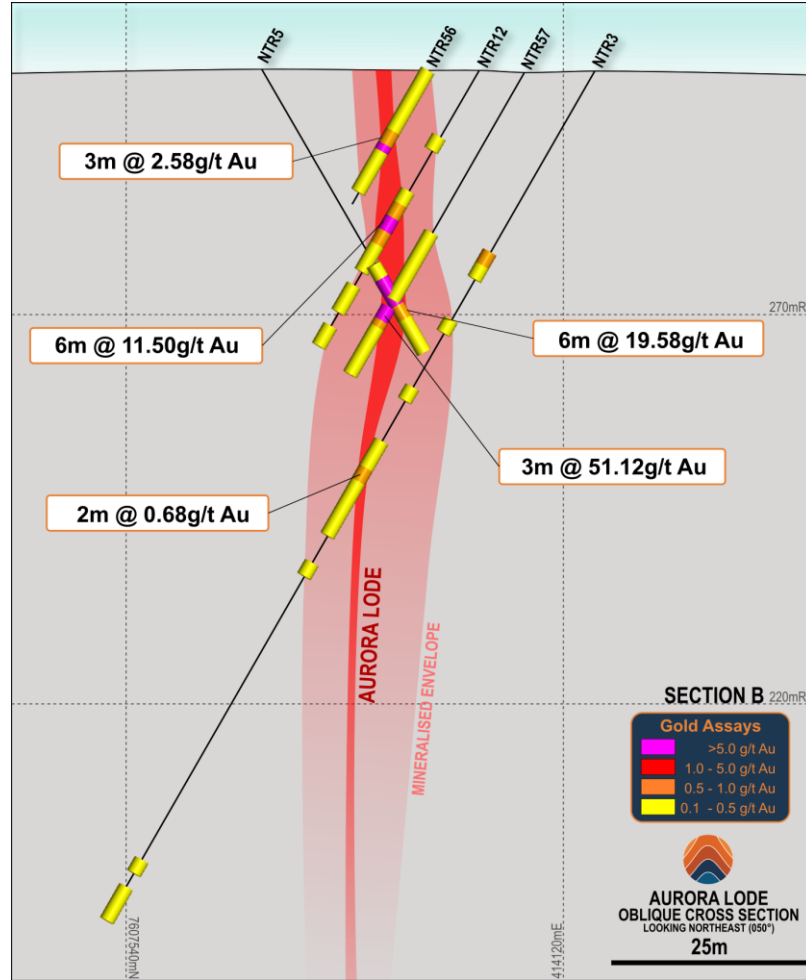
Aurora Lode Long Section (GDA94 z51)

Aurora Lode

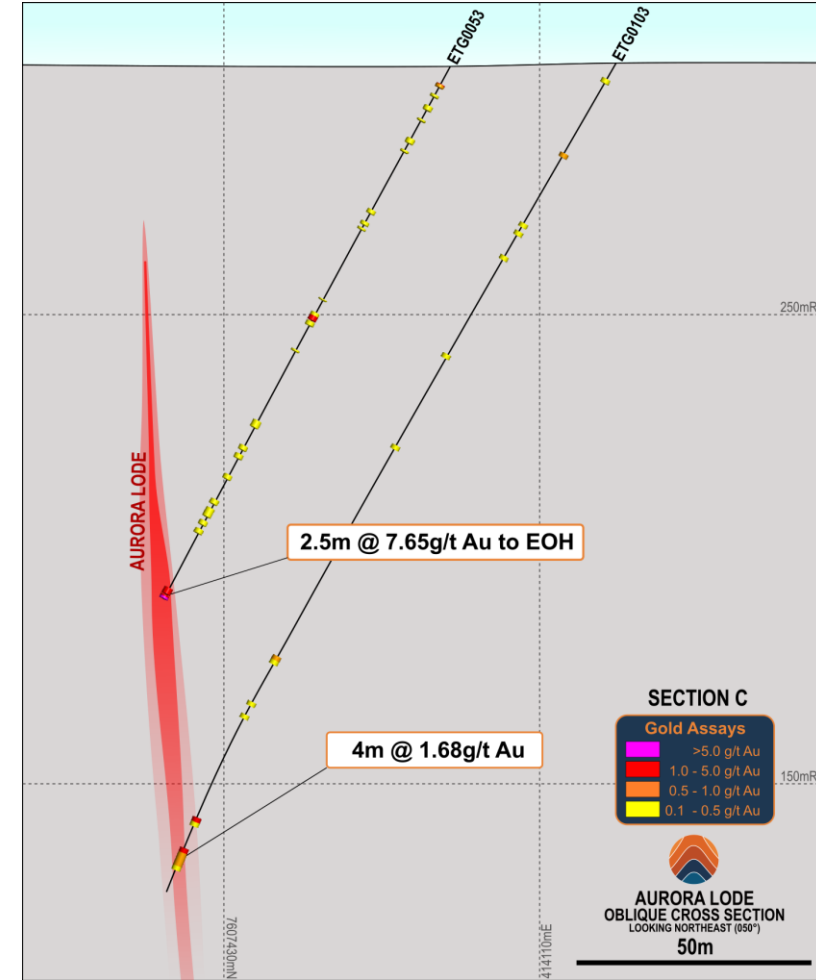
Aurora / Altus Lodes – Section A



Aurora Lode – Section B



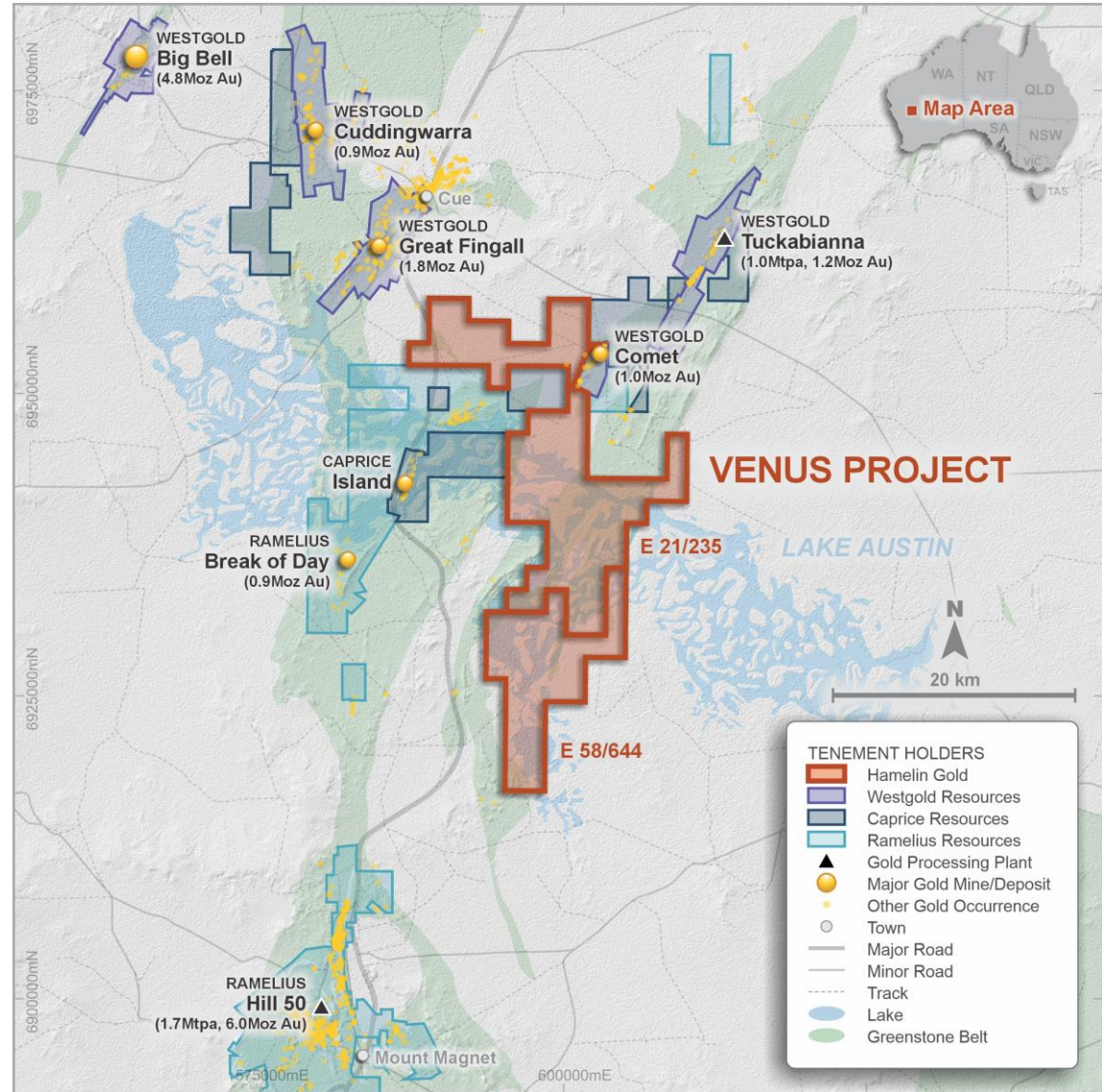
Aurora Lode – Section C



Venus Project - Yilgarn

- Large tenement position adjacent to Ramelius and Westgold gold operations
- 50km north of Mt Magnet and 20km south of the Tuckabianna gold mill
- Neighbour to Caprice's Island project
- Lake Austin covers the clear extensions of known gold corridors
- High grade gold at Magellan
 - 5 metres at 2.95g/t Au from 100 metres to EOH

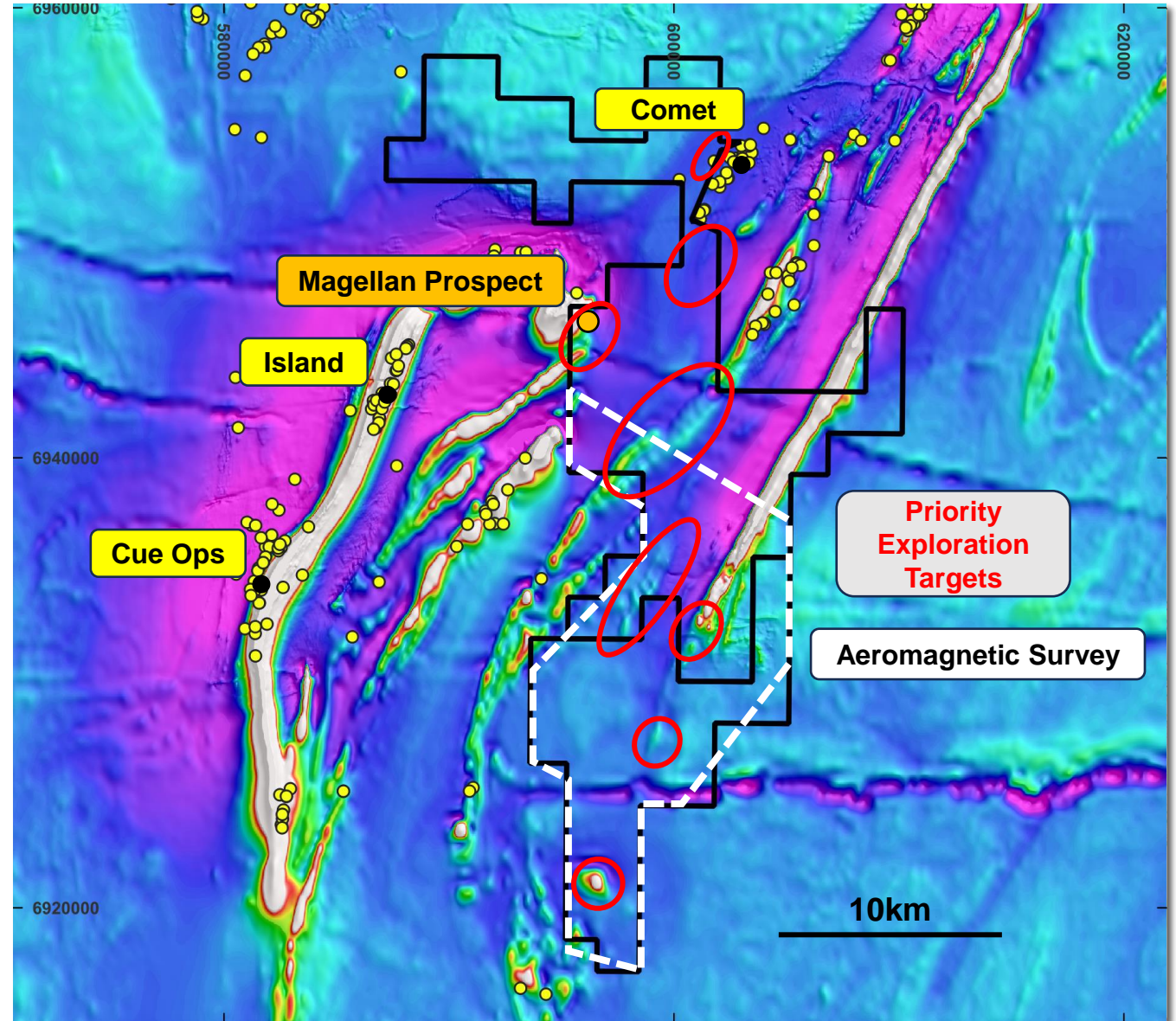
(refer to ASX Announcement 27 January 2026)



Venus Project – Regional location plan and key tenement holders (GDA94 z50)

Venus Project

- Detailed (50m spaced) airborne magnetics and radiometric survey completed
- Magnetics data merged to provided detailed coverage across the entire project area
- Initial targets defined following review of aeromagnetic and geochemical surveys
- Heritage survey booked for May 6-8
- Lake aircore drill program planned for July 2026



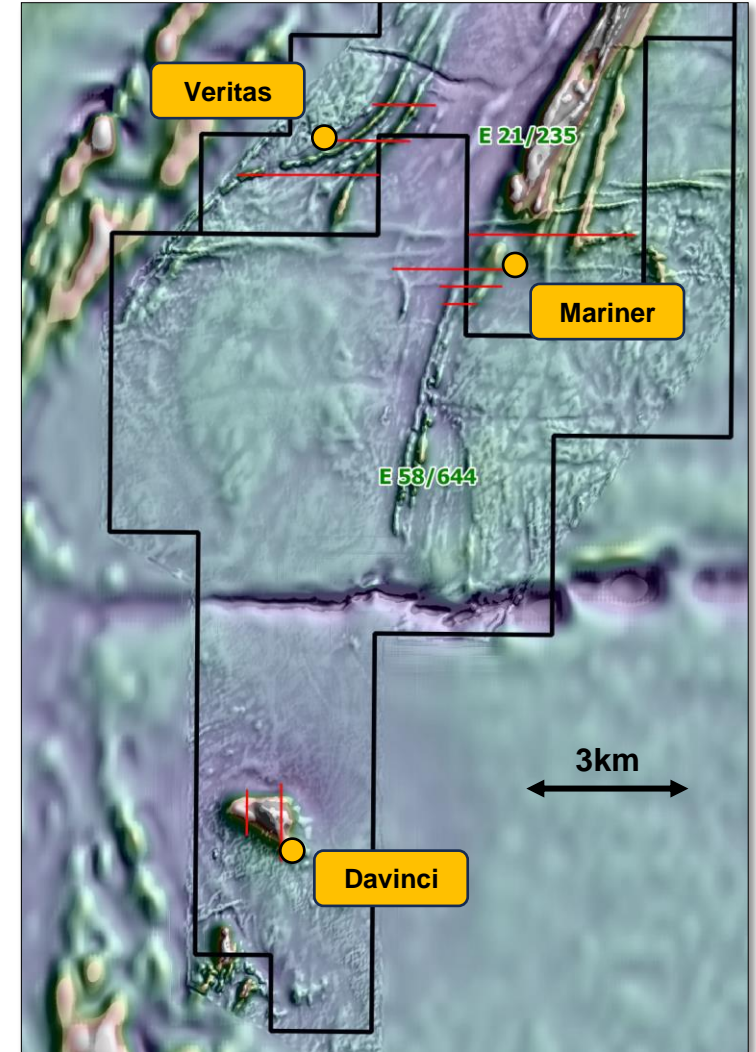
Venus Project – Summary plan and 2026 Targets (GDA94 z51)

Venus Project

- Significant enhancement of key geophysical dataset
- Initial 130 hole, lake aircore program designed to;
 - identify gold anomalism
 - confirm geological interpretation
 - test cover depth
- Infill aircore and follow up RC drilling planned for 2H 2026



Regional aeromagnetics

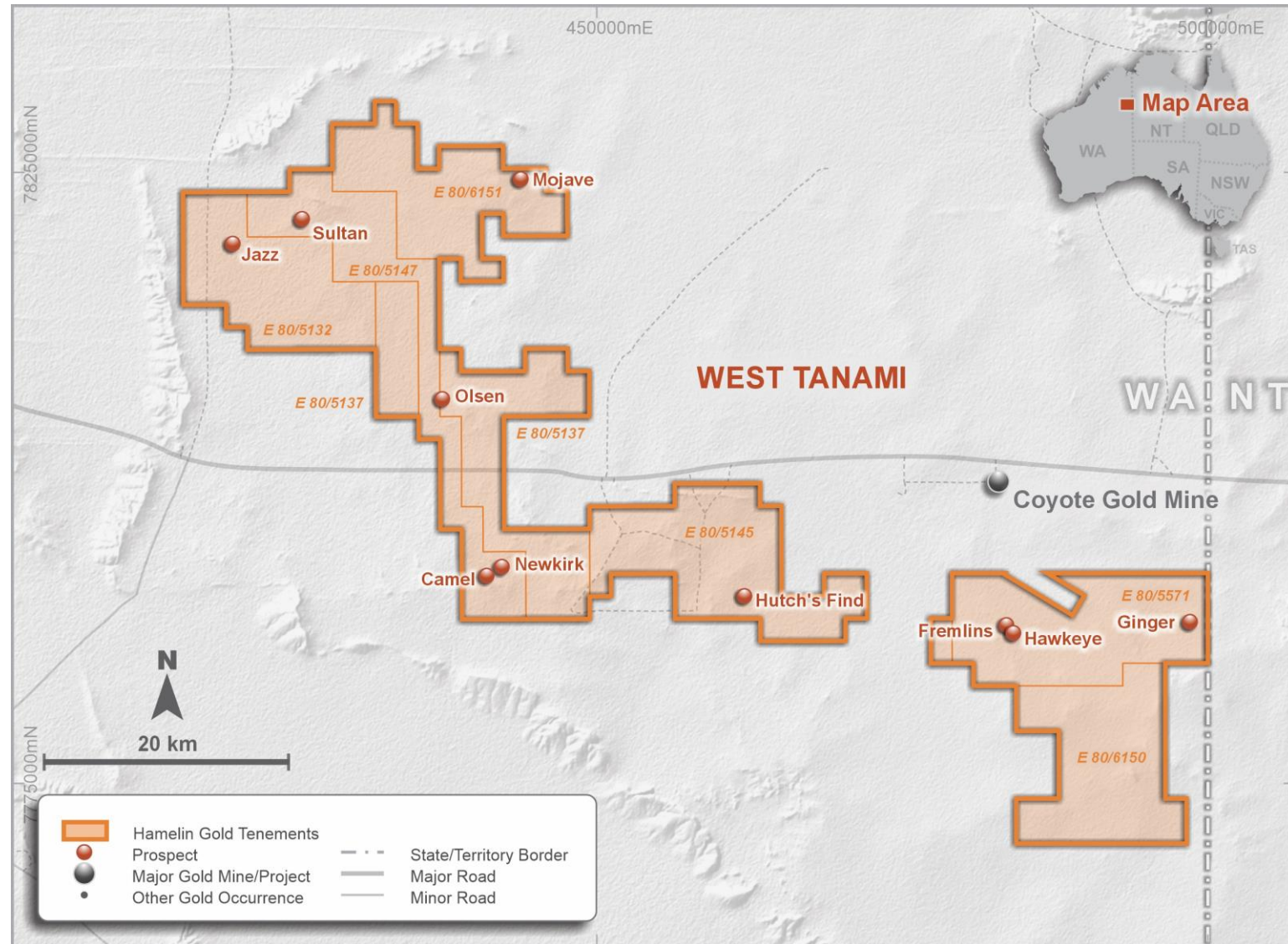


Detailed aeromagnetics

Central Venus Targets – Planned drilling and updated aeromagnetics

West Tanami

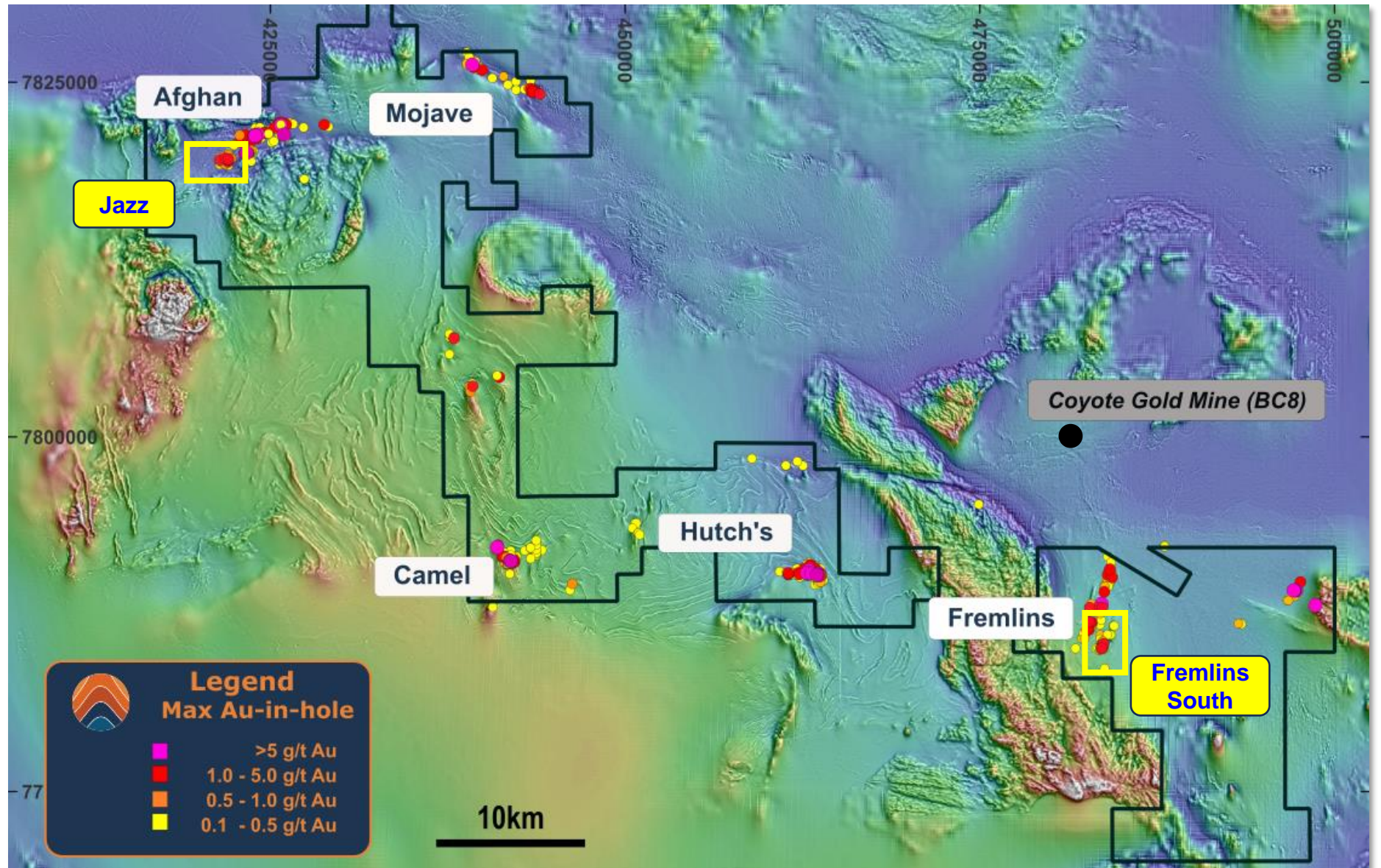
- Use of innovative surface geochemistry, airborne EM and regional aircore drilling to screen for significant mineral systems
- Five large scale mineral systems defined; Sultan, Mojave, Camel, Hutch's and Fremlins
- Bedrock gold mineralisation intersected at Jazz and Fremlins South in 2025
- 2026 programs to search for high grade gold shoots within deposit scale gold footprints



West Tanami Project – Tenements and Key Prospects (GDA94 z52)



West Tanami



West Tanami Project – Maximum gold in hole¹ (+0.1g/t Au), key prospects on magnetics (GDA94 z52)

The Focus for 2026

- Define high-grade gold lodes at Day Dawn, Paterson Province
 - Target initial resource at Aurora
- Diamond drilling at Day Dawn to test the system at depth
- Initial drill test of priority targets at the Venus Project, Yilgarn Province
- Evaluate large scale gold systems for high-grade shoots in the West Tanami, Tanami Province
- Continue to build the WA gold exploration portfolio