

# Building a High-Quality Gold Exploration Portfolio

## Investor Update

February 2025

ASX code : HMG



Photo : UFF Soil Sampling Anderson - January 2025

# Disclaimer and compliance statement

This presentation has been prepared by Hamelin Gold Limited (“Hamelin”). The information contained in this presentation is a professional opinion only and is given in good faith. Certain information in this document has been derived from third parties and though Hamelin has no reason to believe that it is not accurate, reliable or complete, it has not been independently audited or verified by Hamelin.

Any forward-looking statements included in this document involve subjective judgement and analysis and are subject to uncertainties, risks and contingencies, many of which are outside the control of, and maybe unknown to Hamelin. In particular, they speak only as of the date of this document, they assume the success of Hamelin’s strategies, and they are subject to significant regulatory, business, competitive and economic uncertainties and risks. Actual future events may vary materially from the forward looking statements and the assumptions on which the forward looking statements are based. Recipients of this document (“Recipients”) are cautioned to not place undue reliance on such forward-looking statements.

Hamelin makes no representation or warranty as to the accuracy, reliability or completeness of information in this document and does not take responsibility for updating any information or correcting any error or omission which may become apparent after this document has been issued.

To the extent permitted by law, Hamelin and its officers, employees, related bodies corporate and agents (“Agents”) disclaim all liability, direct, indirect or consequential (and whether or not arising out of the negligence, default or lack of care of Hamelin and/or any of its Agents) for any loss or damage suffered by a Recipient or other persons arising out of, or in connection with, any use or reliance on this presentation or information.

The information in this report that relates to Exploration Results is based on information compiled by Mr. Peter Bewick who is a Member of the Australasian Institute of Mining and Metallurgy. Mr. Bewick hold shares and options in Hamelin. He is a full time employee of Hamelin and has sufficient experience which is relevant to the style of mineralisation under consideration to qualify as a Competent Person as defined in the 2012 Edition of the 'Australian Code for Reporting of Exploration Results, Mineral Resources and Ore Reserves'. Mr Bewick consents to the inclusion in the report of the matters based on the information compiled by him, in the form and context in which it appears.

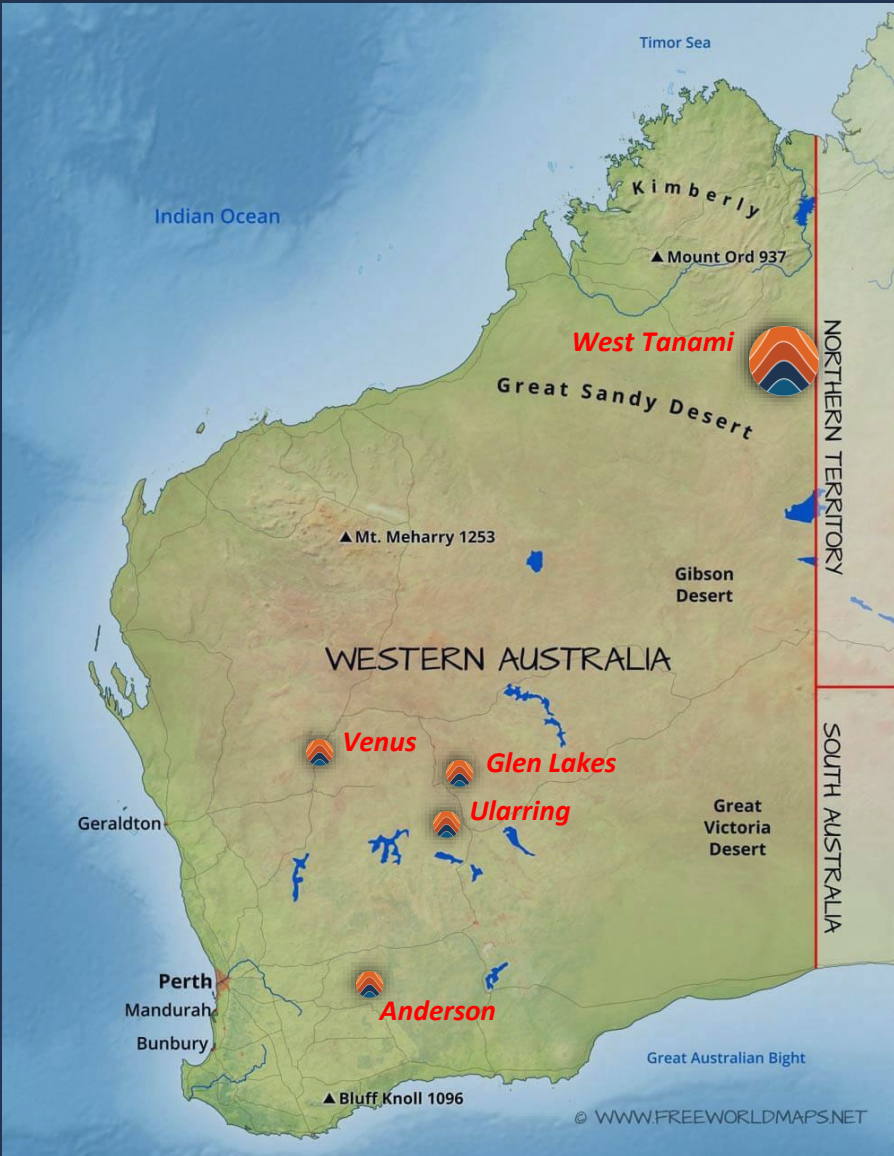
Hamelin confirms that it is not aware of any new information or data that materially affects the information in the relevant ASX releases and the form and context of the announcement has not materially changed. Hamelin confirms that the form and context in which the Competent Person’s findings are presented have not been materially modified from the original market announcements.

Newmont Tanami Operations Resource estimated from Newmont 2022 Reserve Release ([www.newmont.com/investors/reports-and-filings/default](http://www.newmont.com/investors/reports-and-filings/default)) and the 'Newmont Tanami Operations AGES Paper April 2024' referred to in this presentation is Crawford A., Thebaud N., Masurel Q., Maidment D. 2024 Geology and Regional Setting of the Oberon Gold Deposit ([https://geoscience.nt.gov.au/gemis/ntgsjspui/bitstream/1/92875/3/CrawfordAGES2024\\_paper.pdf](https://geoscience.nt.gov.au/gemis/ntgsjspui/bitstream/1/92875/3/CrawfordAGES2024_paper.pdf))

This announcement has been approved for release by the Board of Hamelin.



# Hamelin Gold Corporate Shapshot



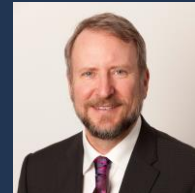
## BOARD and KEY MANAGEMENT



**Will Robinson**  
Non Executive Chairman  
*B.Comm, MAusIMM*



**Peter Bewick**  
Managing Director  
*B.Eng (Hons), MAusIMM*



**Justin Osborne**  
Non Executive Director  
*B.Sc (Hons), FAusIMM, MAICD*



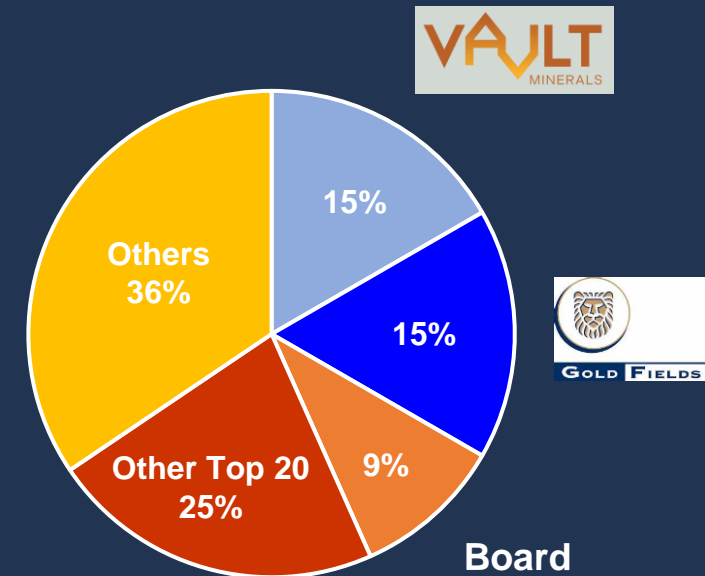
**Philip Crutchfield KC**  
Non Executive Director  
*B.Comm, LL.B (Hons), LL.M LSE*



**Clayton Davys**  
Exploration Manager  
*B.Sc (Hons)*

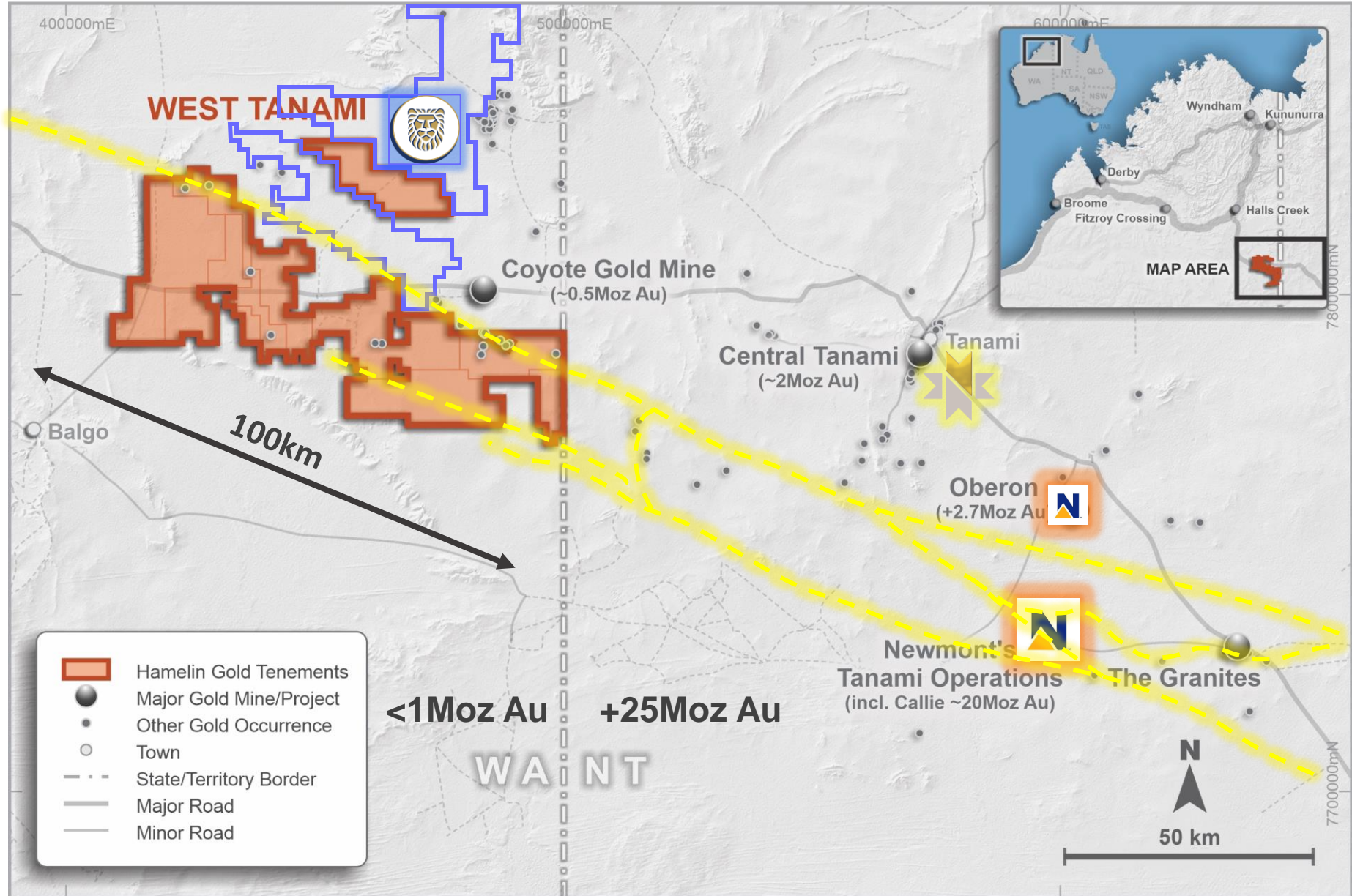
## CAPITAL STRUCTURE

Shares on Issue	158.1M
Employee options	16.1M
Market capitalisation (@ 6.3c)	\$10.0M
Cash	\$3.3M
Enterprise value	\$6.7M





# West Tanami: 2,500km<sup>2</sup> Project in a Tier 1 Goldfield



# A New Dawn in the Tanami

Driven by new discoveries and endowment potential

## Newmont

- US\$1.7B expansion including 1.46km shaft
- Lowest cost gold production globally (AISC US\$1,060<sup>1</sup>)
- Expanding from ~500,000oz pa to +650,000oz pa
- Major new development project at Oberon +2.7Moz<sup>2</sup>

## Northern Star

- Central Tanami JV with Tanami Gold
- A\$15M 2023/24 exploration budget<sup>3</sup>

## Gold Fields

- Killi Resources JV – A\$13M earn-in
- 15% shareholding in Hamelin Gold



**TE2 Headframe – Newmont's Tanami Gold Operations**



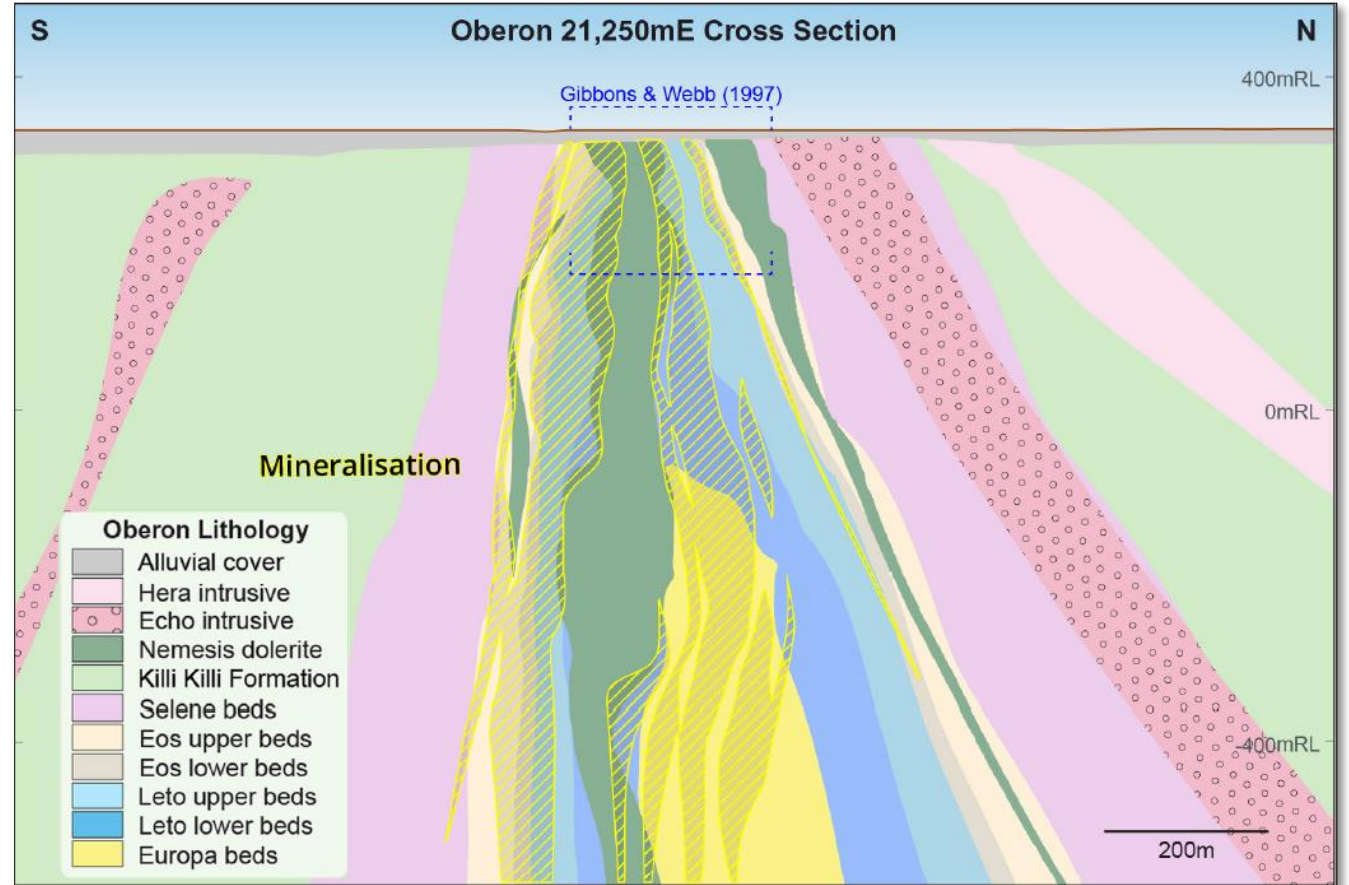
Refer to Newmont 2023 Annual Report<sup>1</sup> and Newmont Tanami Operations AGES Paper Crawford et al 2024<sup>2</sup> and Tanami Gold ASX Announcement 27 June 2023<sup>3</sup>



# Newmont's Oberon Discovery (+2.7Moz)

## New discovery 30yrs in the making

- Latest major development project in the Tanami for Newmont
- Single point geochemical anomaly (2ppb Au) and single EOH auger anomaly (28ppb Au) undercover
- Broad (+2km) alteration footprint
- Hosted within and on the margins of a tightly folded dolerite unit
- New prospective stratigraphic sequence identified – Mt Charles Formation
- Intense drilling program ongoing with expectations of significant resource growth



Oberon Deposit cross section



# New Technologies for Undercover Terrains





# Target Generation : Prediction and Detection

*New Geophysical Datasets : Airborne  
EM, gravity and magnetics*



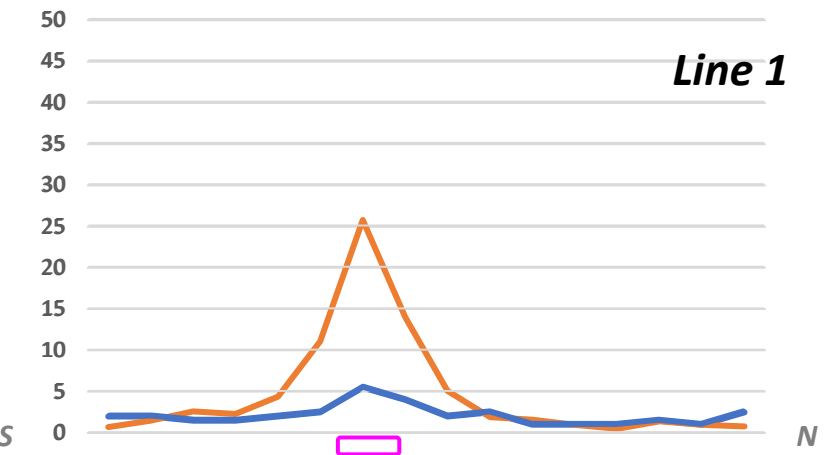
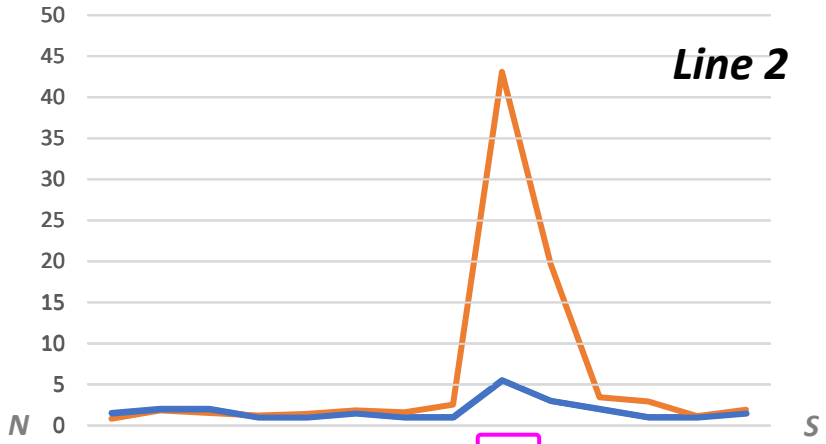
*New Geochemical Tools : CSIRO  
developed Ultrafine<sup>®</sup> soils*



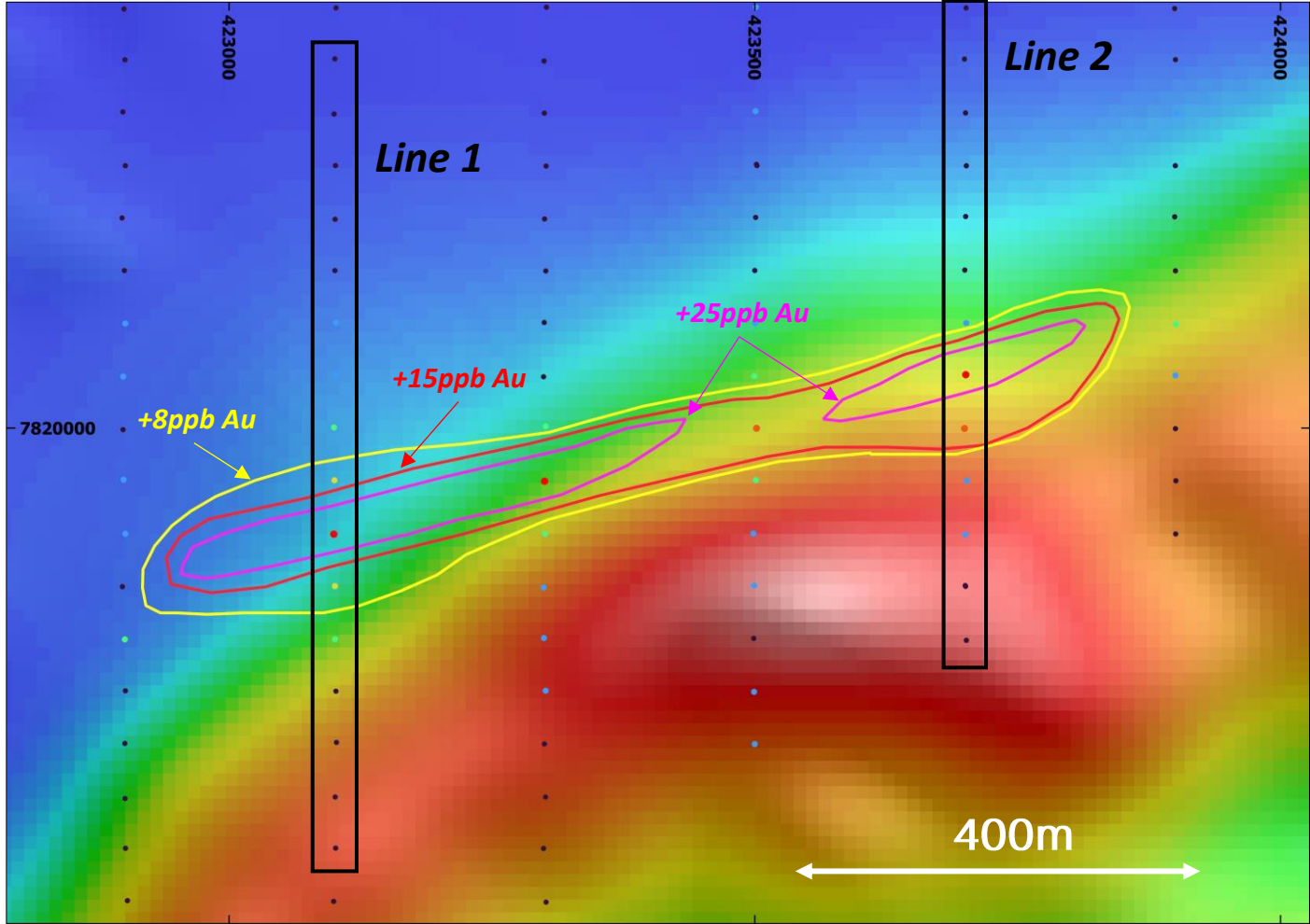


# Amplifying Gold Signatures Undercover

## Conventional Soils vs New Ultrafine® Technology



— Conventional Soils (-2mm)  
— Ultrafine®

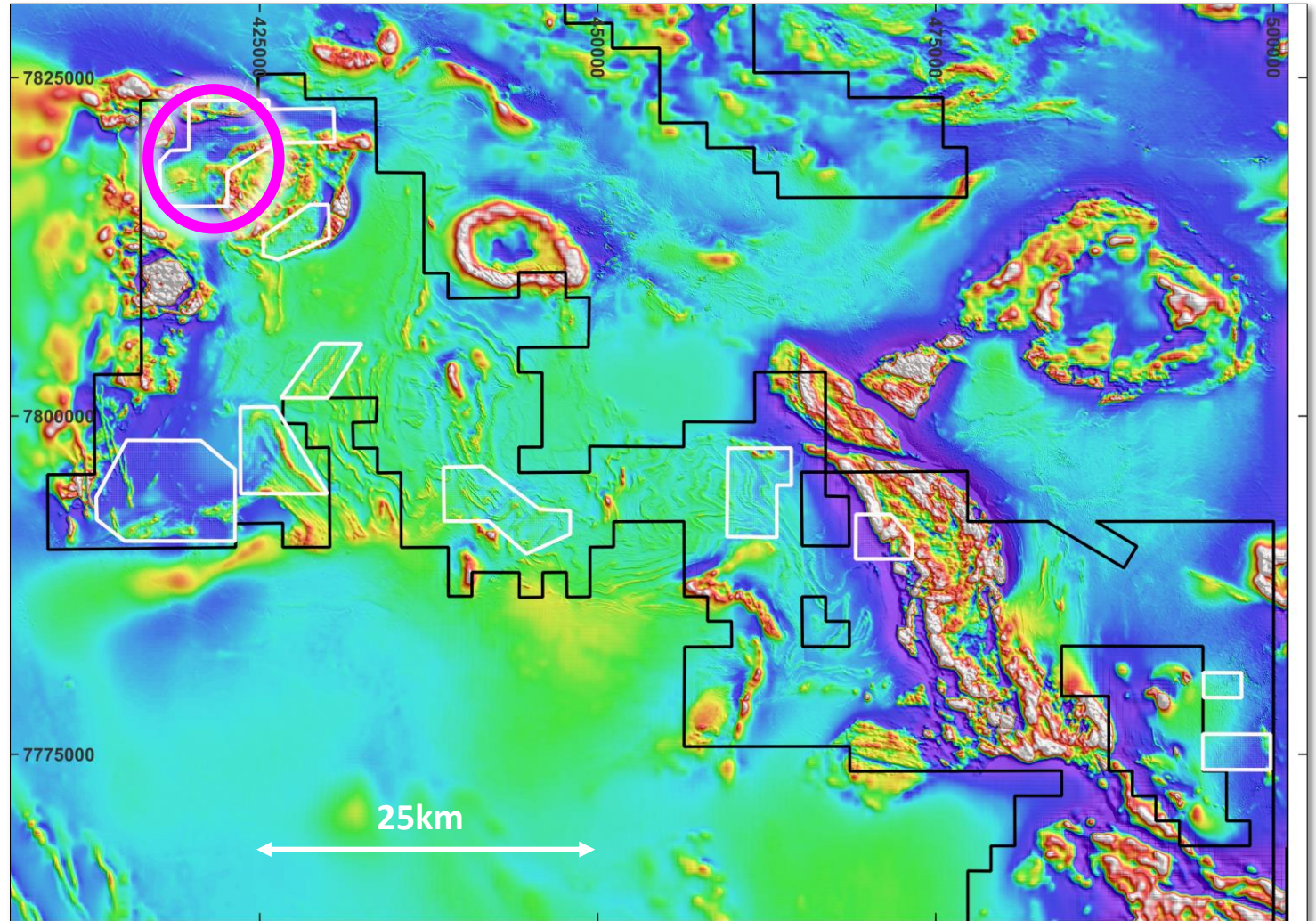


Sultan West – Ultrafine Soil Results on magnetics background



# Regional Geochemical Program

- Orientation surveys and trials completed through 2023/24
- 10 regional scale geochemical targets tested in late 2024
- Validation across multiple surficial conditions and varying geological settings
- +3,000 surface sample program completed
- Samples analysed utilising Labwest's Ultrafine ® technique



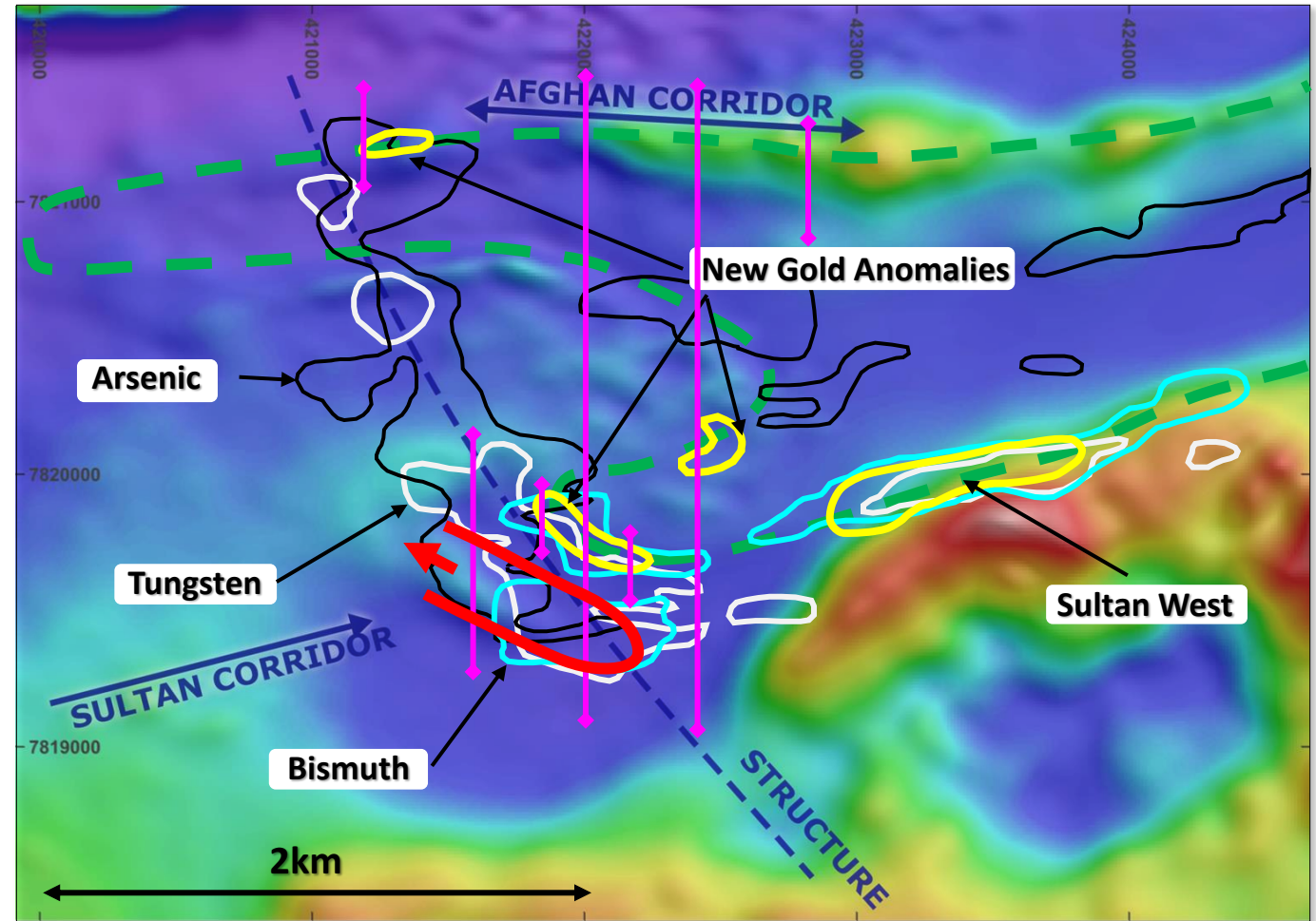
*West Tanami Project – Regional geochemical program*



# Jazz Prospect

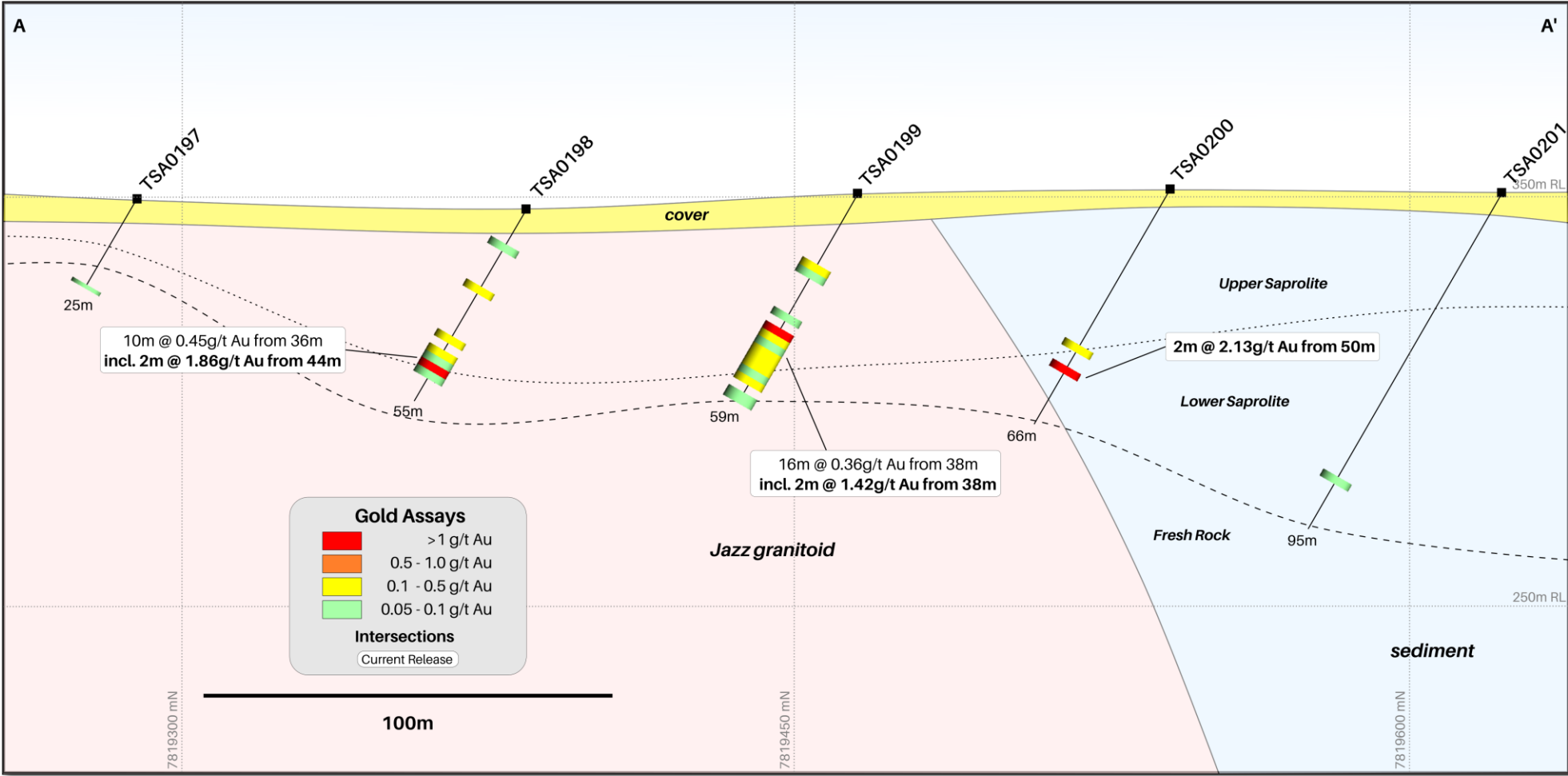
## Strong conceptual and empirical anomalies

- Complex folded and faulted geology containing host mafic unit
- Gold + Bismuth 'mineralization signature' defined
- Large hydrothermal system mapped out in multiple elements As, Mo, W
- Favourable structural architecture
- Initial aircore program completed in late 2024
- New gold zone discovered



*Jazz Prospect – Ultrafine anomalies on magnetics*

# Jazz Prospect



Jazz Prospect – Aircore Drill Section (422,020mN)

Refer ASX Announcement dated 13 January 2025

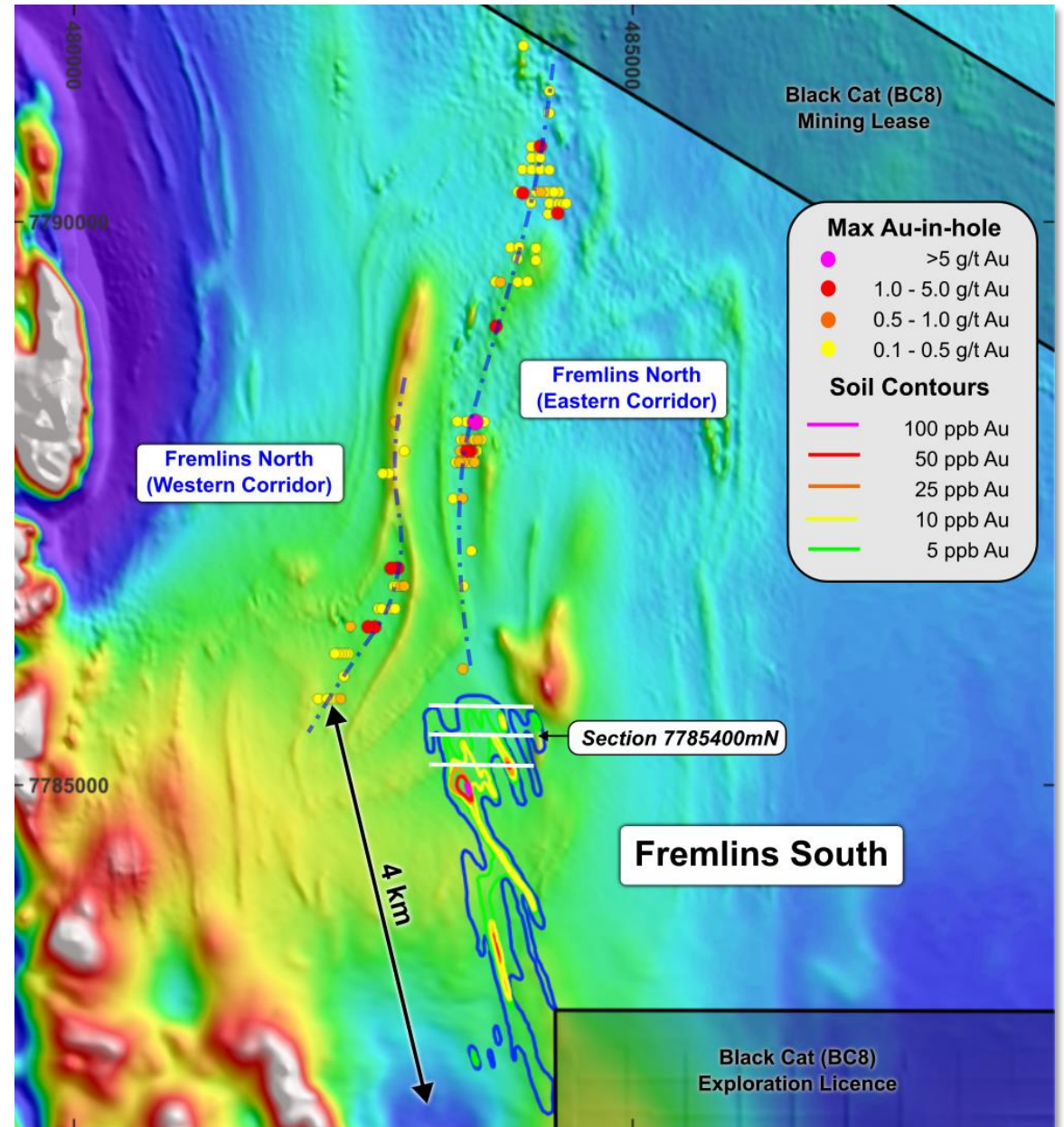


# Fremlins Prospect

- 9 kilometre long gold system defined by geochem, shallow drilling
- Southern 4 kilometres ineffectively tested with 7 metre deep posthole RAB drilling
- Aircore drilling identified anomalism below shallow holes – January 2024
- 4 hole RC program defines broad zones of gold mineralisation in fresh rock
- Template for assessing similar ineffectively drilled targets across the West Tanami



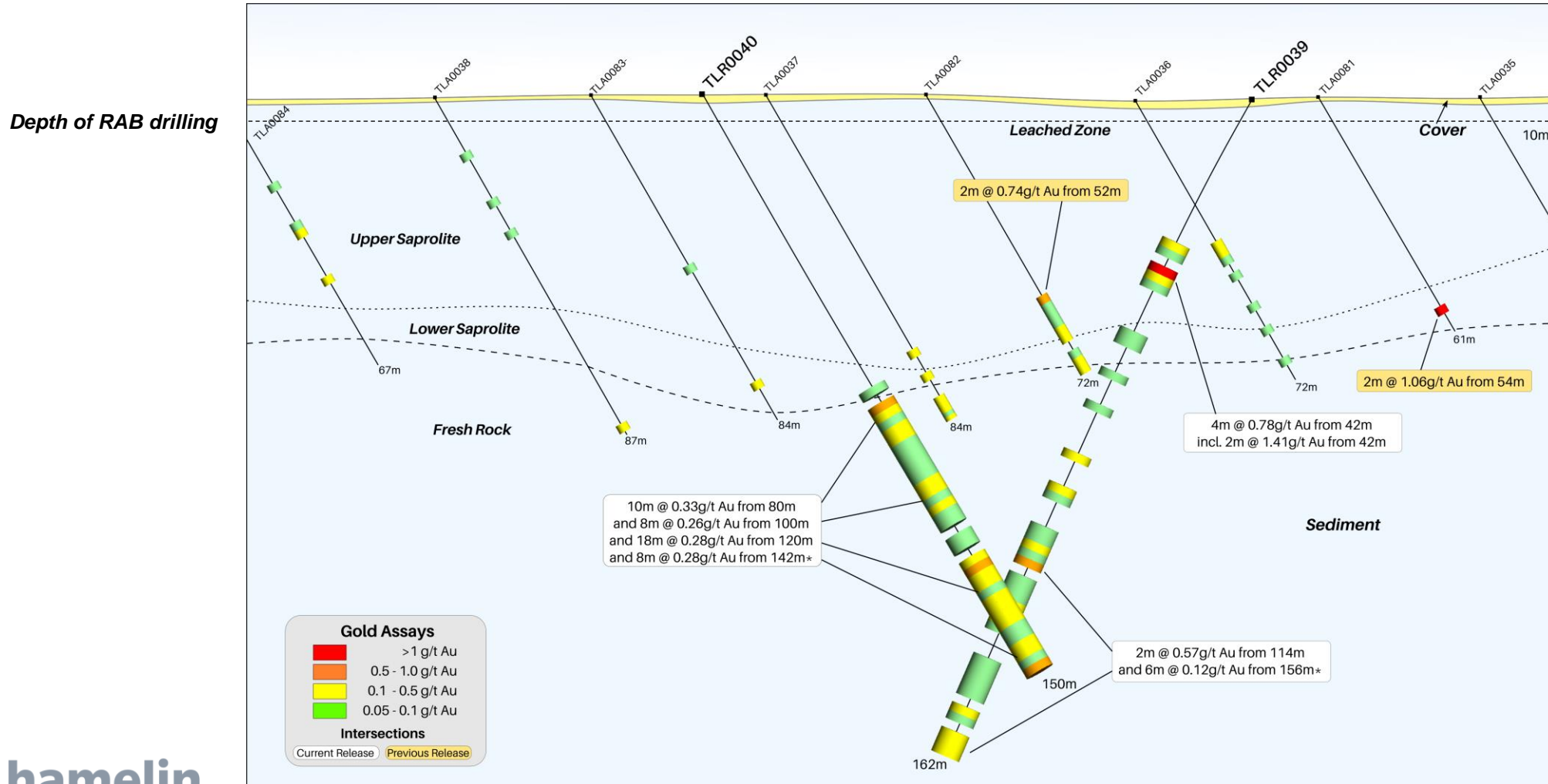
Refer ASX Announcements dated 26 August 2024



Geochemistry, max Au-in-hole on detailed TMI magnetics

# Fremlins Prospect

## Historical shallow, ineffective drilling



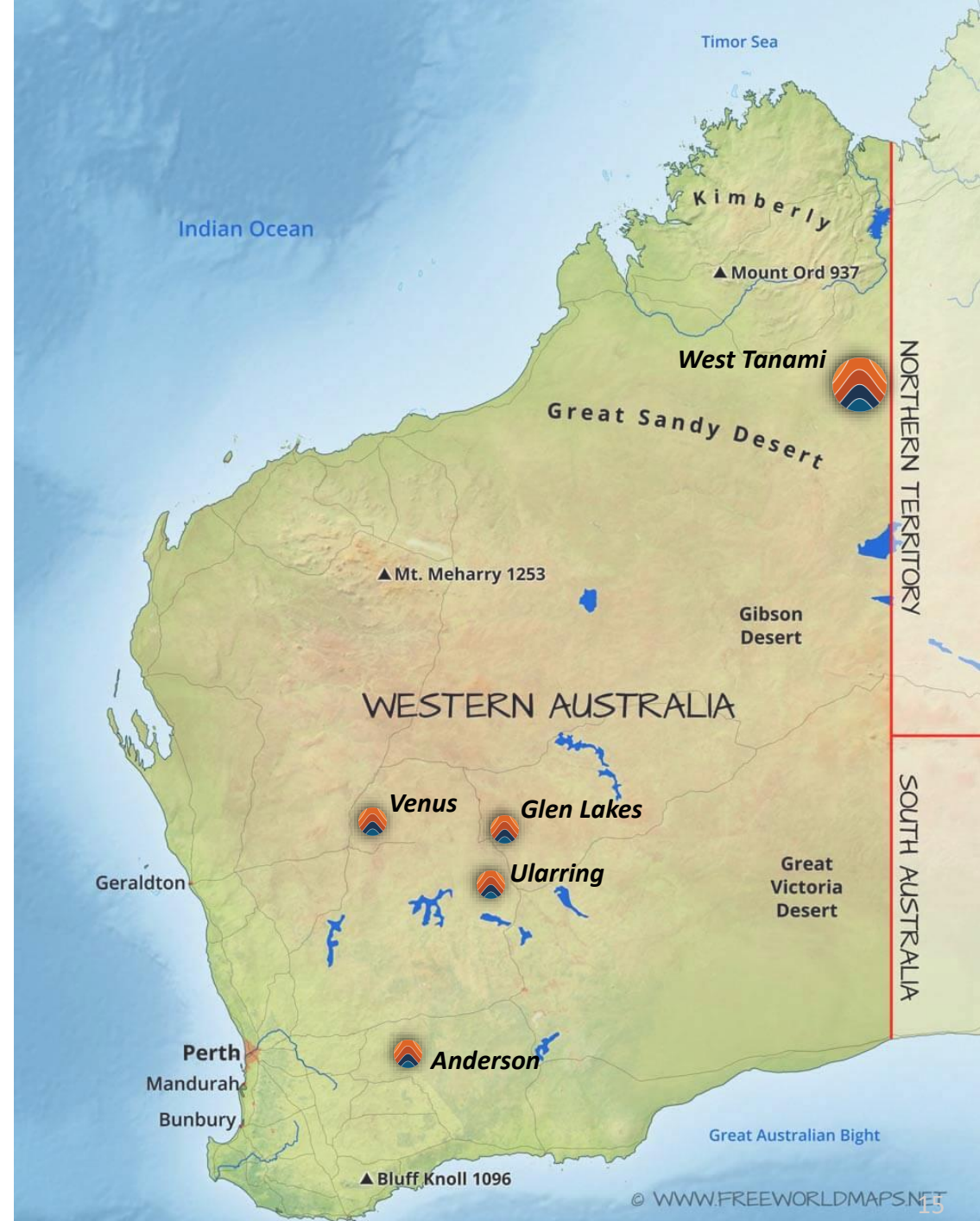
Fremlins South – X/S 7,785,400mN

Refer ASX Announcements dated 26 August 2024



# Yilgarn Projects Status

- **Ularring (Riverina South) – 61km<sup>2</sup>**
  - Adjacent to Labrynith's Mulwarrie project and 18km south of Ora Banda's Davyhurst project
  - UFF soil survey completed – Drill target defined
- **Anderson (30km North of Hyden) - 500km<sup>2</sup>**
  - Phase 1 UFF soil confirms strong gold anomalism
  - Phase 2 UFF sampling along fencelines defines bedrock gold target
  - Phase 3 UFF completed Jan '25
- **Venus (15km east of Cue) – 200km<sup>2</sup>**
  - Application covering the southern extension of the Tuckabianna and Comet gold trends
- **Glen Lakes (South of Bronzewing) – 55km<sup>2</sup>**
  - Application progressing to grant

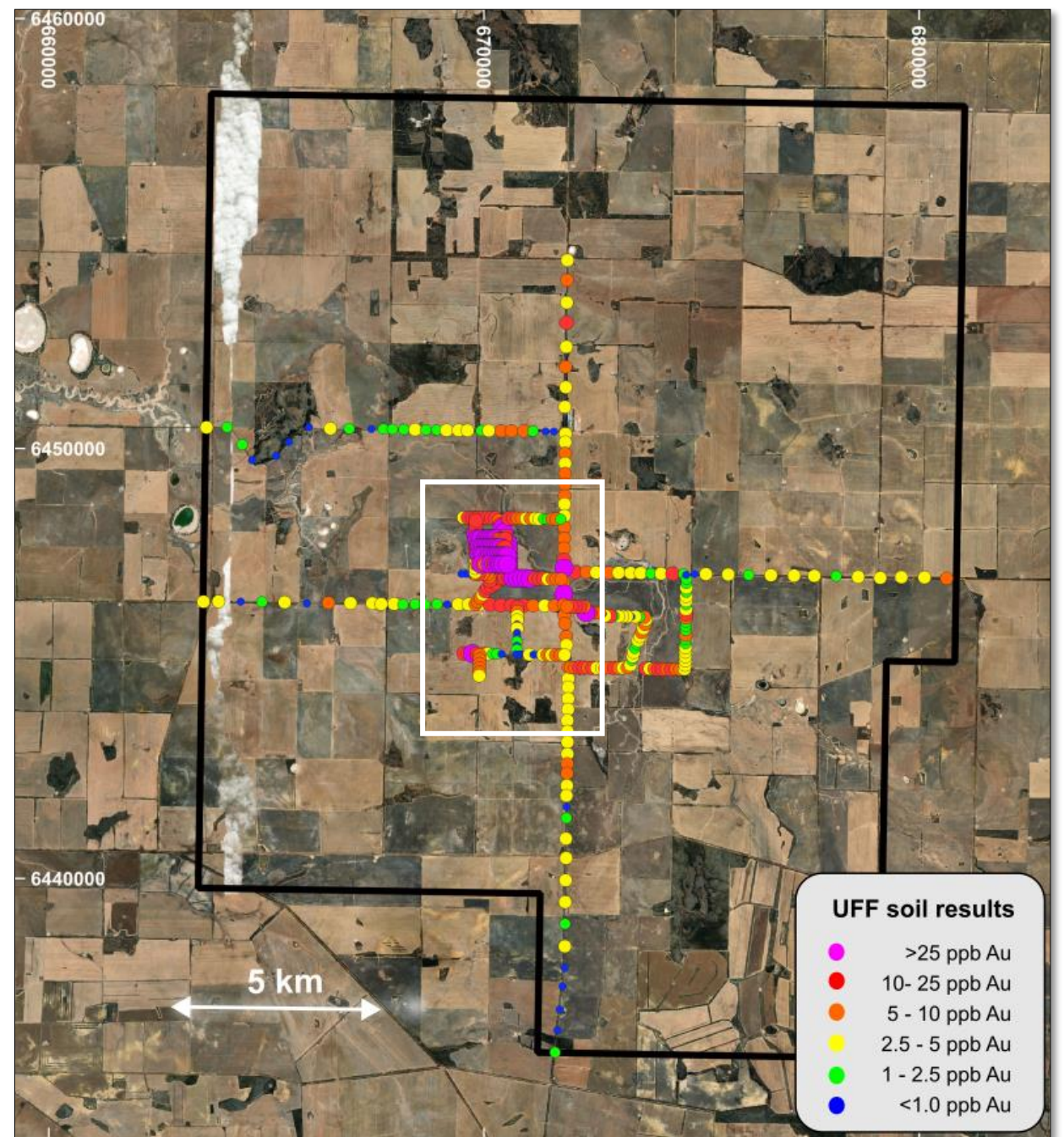


# Anderson project

- Ideal trial site for the evaluation of Ultrafine<sup>®</sup> analysis of soil samples
  - Extensive shallow sand and thicker channel cover
  - Regional calcrete gold anomaly
  - Aircore drilling defined bedrock gold mineralisation
- Ultrafine sampling along roadsides outlined regional scale gold anomaly
- Infill completed along fencelines and internal tracks



Refer ASX Announcements dated 29 January 2025



Anderson Project – UFF Results



# Anderson project

- Interrogation of multi-element UFF data shows anomalies derived from bedrock source and anomalies in transported material
- Historical drill data confirms interpretation
- Strong EOH gold within 'bedrock target' corridor
- Phase 3 Infill sampling within southern paddocks completed Jan 2025 (results due Mar 2025)
- New application to the east increases project to ~500km<sup>2</sup>

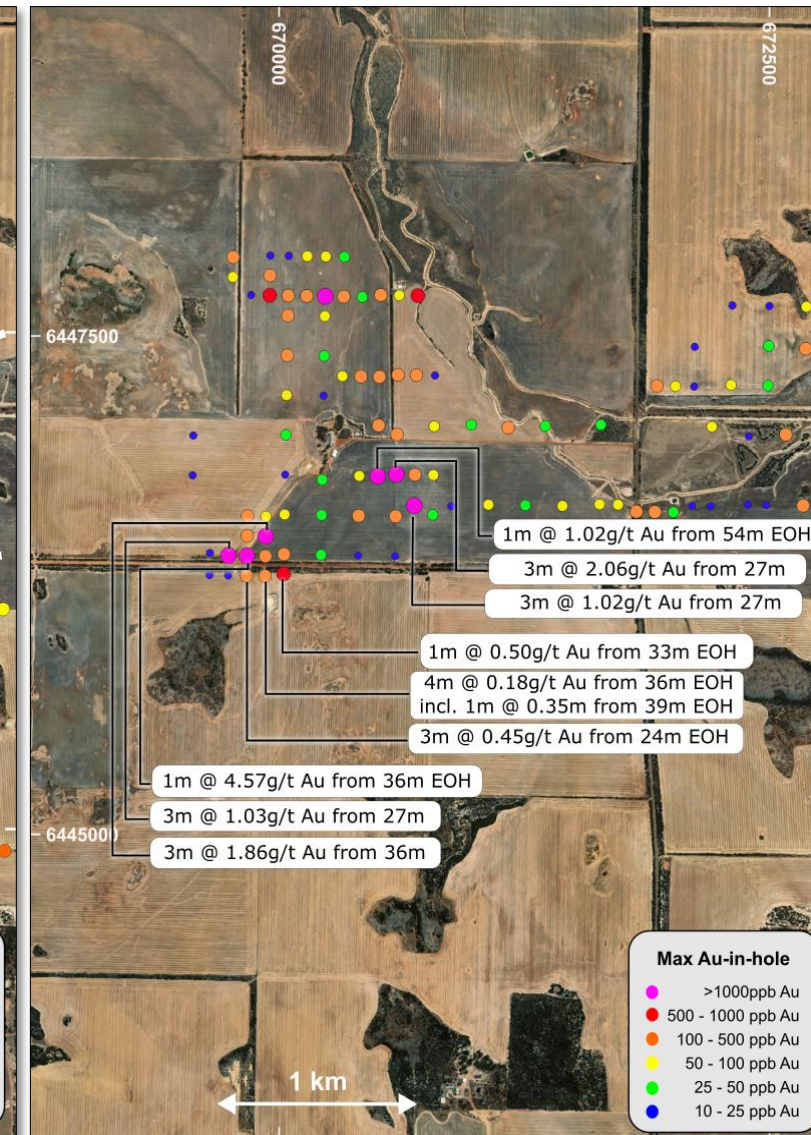
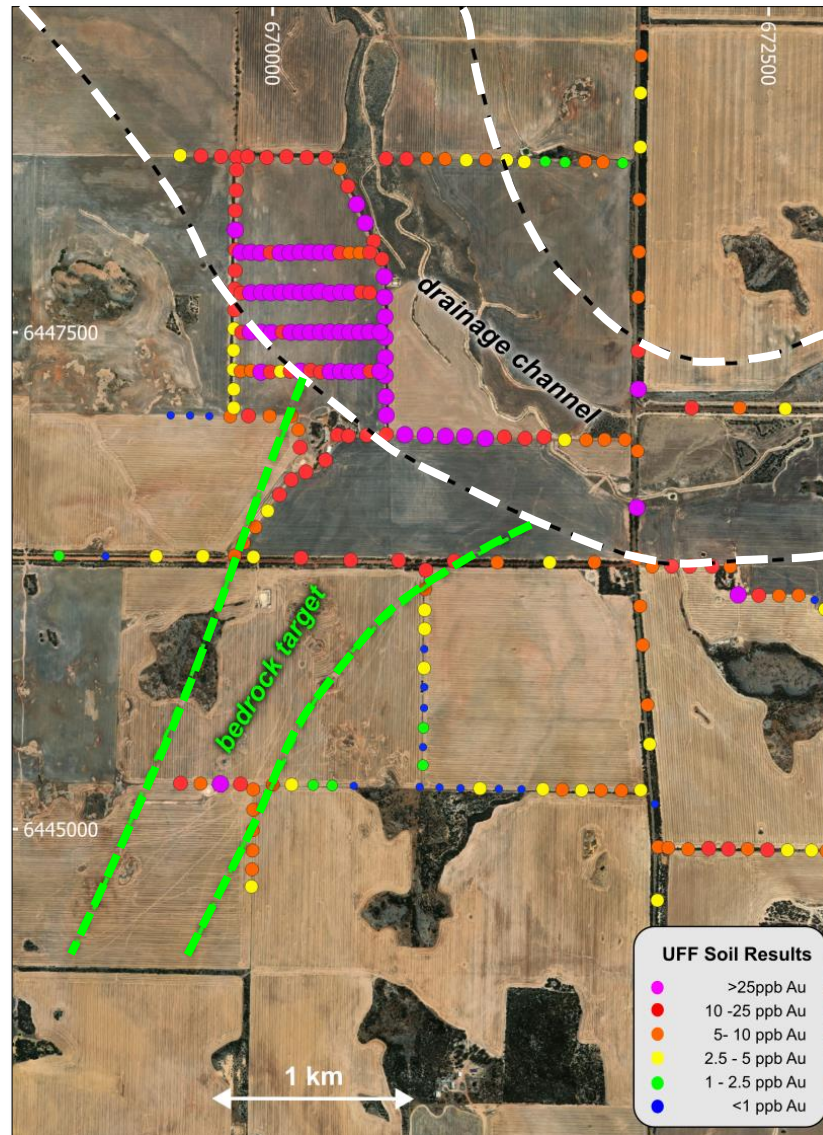




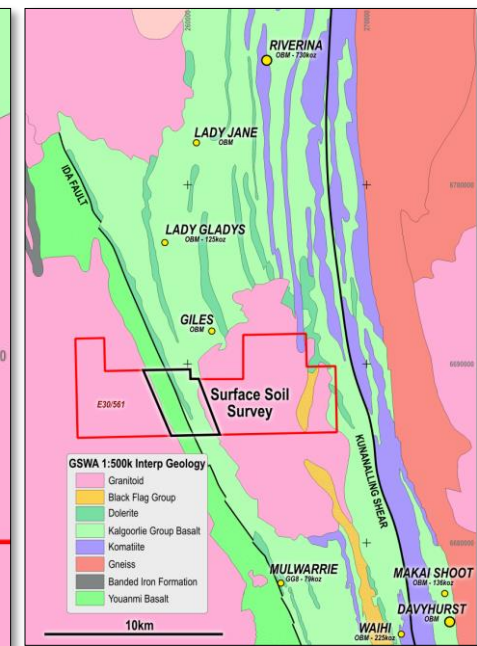
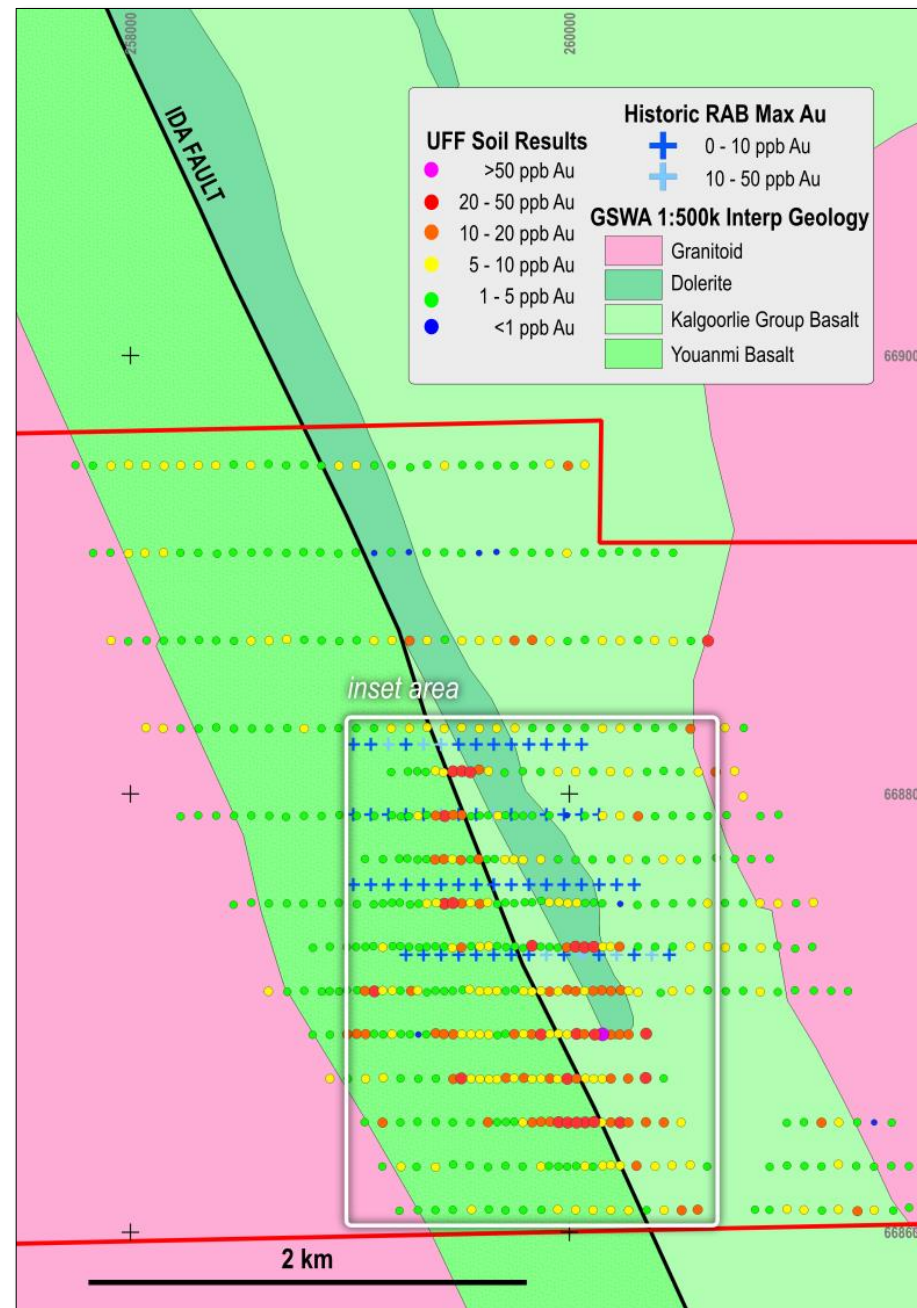


Photo : UFF Soil Sampling Anderson - January 2025



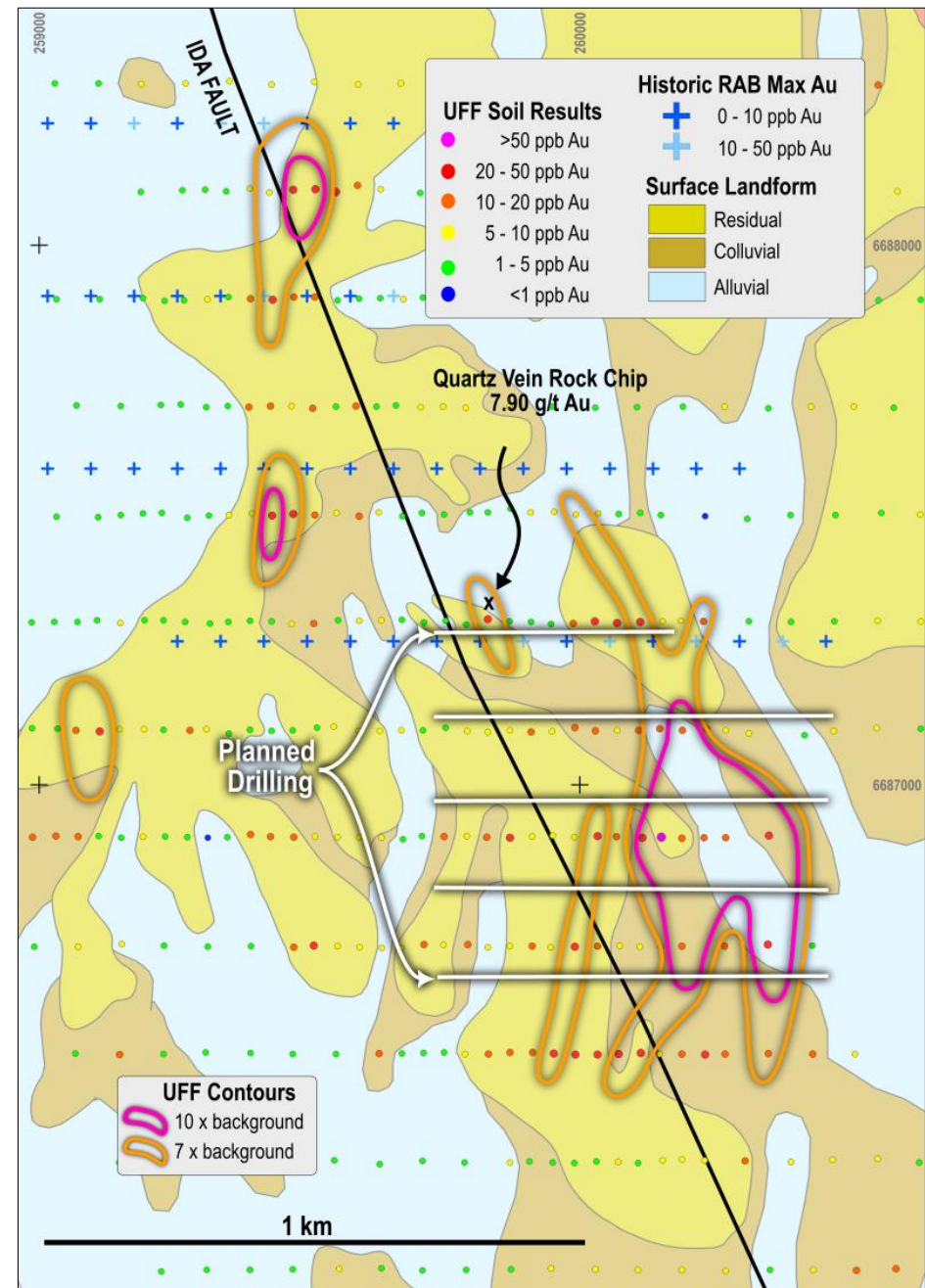
# Ularring project

- 130km northwest of Kalgoorlie
- Under-explored 4km long section of the Ida Fault
- Greenstone lithologies targeted for surface sampling program and analysis utilising UFF technology
- Located between Riverina (18km north) and Davyhurst (18k south)



# Ularring project

- Geochemical data categorised by landform and levelled
- 500m long, discrete gold geochemical anomaly defined (10x background)
- Single sample of sub-cropping quartz vein collected just north of the anomaly returned assay grade of 7.9g/t Au.
- Aircore / slimline RC drilling planned to commence in March 2025



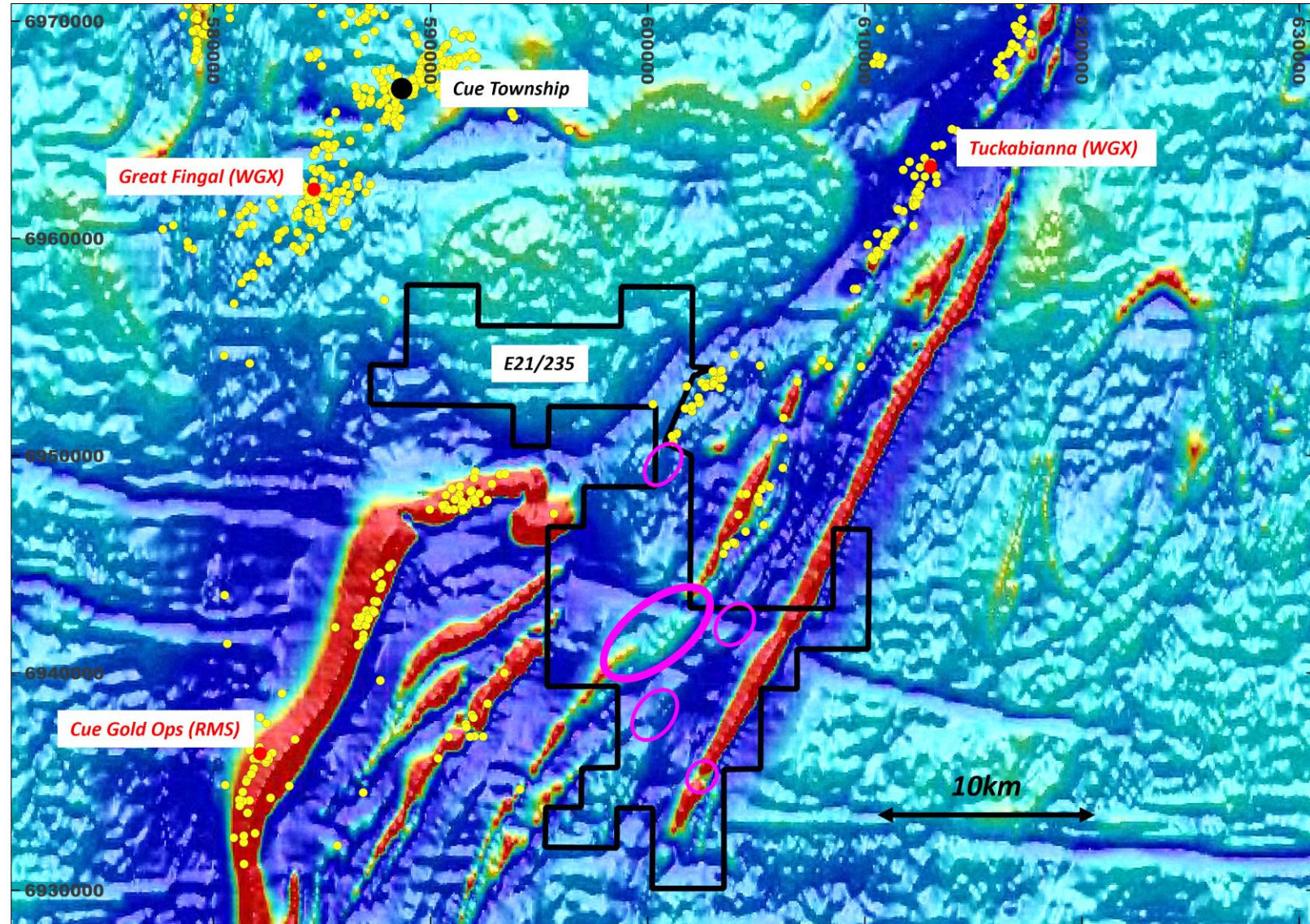






# Venus Project

- Flexure in NNE trending structure coincident with area of magnetic destruction on Tuckabianna trend
- Southern strike extension of the Comet gold corridor
- Interpreted fold closure and structural termination of fold axis
- Breaks along BIF units





# Timeline of Activities 1H 2025

- AC drilling program (2,500m) – Ularring project March 2025
- Phase 3 Infill UFF results – Anderson project March 2025
- Heritage Survey – West Tanami March - Apr 2025
- RC drilling program (2,500m) - West Tanami May - June 2025
  - Jazz prospect
  - Fremlins South (EIS co-funded)
- Aircore drilling (5,000m) – West Tanami June – July 2025





# Contact

Telephone: [+61 8 9486 9455](tel:+61894869455)

Website: [www.hamelingold.com.au](http://www.hamelingold.com.au)

Email: [contact@hamelingold.com.au](mailto:contact@hamelingold.com.au)

Suite 2, 1 Alvan Street

Subiaco WA 6008

ASX: HMG

